



# Wahpeton Breckenridge

## CHAMBER OF COMMERCE

### *Chamber Board of Directors*

Jodi Hendrickson - President

Edward Jones

Edd Goerger - Vice President

Heartland Insurance

Jim Cornelius - Secretary

Benedictine Living Community

Chris Kappes - Director

Circle of Nations

Angela Cruff - Director

Blue Cross Blue Shield

Becky Dockter - Director

OSPTI

Kory Kaste - Director

SVEDA

Tana Erbes - Director

NDSOS

Mary Wolfgram - Director

Twin Town Villa

Gail Grant - Director

CHI St. Francis Health

### *Staff*

Lisa Kunkel - Executive Director

Allison Karlgaard - Executive Assistant

### *Business Pitch Challenge and Networking Event*

Have you heard about the Business Pitch Challenge? This is an exciting opportunity for anyone who has a great idea for a new business in Wahpeton but needs a little help getting it going.

Southern Valley Economic Development Authority and Wahpeton Breckenridge Area Chamber of Commerce have teamed up to offer support to up to 10 business ideas. We also have a fabulous prize package worth over \$28,000 for the winner of this challenge.

On Wednesday, October 5th join us at Bois de Sioux Grille Room to meet the entrepreneurs and hear their ideas. Social starts at 5:00 and the participants will be announced at 5:30. Meal is included and there will be a cash bar.

The Twin Town Ambassadors have been busy making plans for this year's Mix & Mingle on October 13th from 5:00 to 7:30 at the Wahpeton Event Center. Each year this networking event is held to provide businesses the opportunity to share what they have to offer. The event is open to the public and is a fun way to connect with our area businesses. There will be music by Double A DJ, a street taco buffet beginning at 5:00 until gone, cash bar, and door prizes. You'll want to make sure you stick around for the grand prize drawing at 7:00 for a ¼ beef from Bruders' Butcher and small chest freezer from Nielsen's Electric. You must be present to win. Tickets are available at the Chamber Office for \$10 each or \$15 the day of the event.

To find out more about these events and to keep up to date on everything happening in the Twin Towns go to our website at [www.wbchamber.net](http://www.wbchamber.net) or follow us on Facebook.



*Join our Team*

We are currently looking to add more ambassadors to our group. The Twin Town Ambassadors meet the 2nd Tuesday of each month at 8:30 am at the chamber office. Being an ambassador is a great way to learn more about what is happening in the businesses in our community.

If you would like to join this fun, energetic group and help us celebrate the milestones of our business community, please feel free to contact us and we'd be happy to give you more information.

## *Twin Town Ambassadors*

Amanda Crouse - President

Bremer Bank

Diana Hermes - Vice President

Daily News

Wendy Kahler - Secretary

Red River Human Services

John Nyquist

Edward Jones

Carla Broadland

City of Wahpeton

Brittany Myhra

Chahinkapa Zoo

Mary Wolfgram

Twin Town Villa

Kory Kaste

SVEDA

Raychel Wallender

Schmitt's Plumbing, Heating & Sheetmetal, Inc.

Brittany Finnie

Nielsen Electric TV & Appliance Center

Mitch Ronan

Bell Bank

Angie Cleveland

CAPLP

Jenna Lovgren

Red River Communications

Stevin Lipp

Country Financial

Lindsay Auwarter

Leach Home

Mandy Steinberger

Breckenridge Family Comm. Center

Tony VanDyke

Thrivent Financial

Farah Grey

Econo Foods

Judy Comings

Healing Arts Chiropractic

Ashley Mohs

First Community Credit Union

Julie Rosenberg

Essentia Health

Chelshey Grandstrand

Richland Title

Rhonda Thiel

QSciences

Amber Bogenreif

Red River Valley & Western Railroad



**Business  
Spotlights**

The Wahpeton Breckenridge Chamber  
Ambassadors would like to Welcome  
Red River Communications &  
3 Borders Sports Network



**Red River Communications  
522 Dakota Ave.  
Wahpeton, ND 58075  
701-553-8226  
<https://redrivercomm.com>**



**3 Borders Sports Network  
522 Dakota Ave.  
Wahpeton, ND 58075  
[3borderssportsnetwork@gmail.com](mailto:3borderssportsnetwork@gmail.com)  
<https://3borderssportsnetwork.com>**



# Business Spotlights

The Wahpeton Breckenridge Chamber  
Ambassadors would like to Welcome  
Anytime Fitness  
& Northside Nutrition



**Anytime Fitness**  
1651 Wheatland Rd.  
Wahpeton, ND 58075  
701-591-0192

<https://www.facebook.com/AnytimeWahpeton/>



**Northside Nutrition**  
906 16th Ave. N.  
Wahpeton, ND 58075  
701-975-0950

[Joschreiner.goherbalife.com](http://Joschreiner.goherbalife.com)

[www.facebook.com/people/Northside-Nutrition/100083228986007](https://www.facebook.com/people/Northside-Nutrition/100083228986007)



**Business  
Spotlights**

The Wahpeton Breckenridge Chamber  
Ambassadors would like to Welcome  
Väderstad

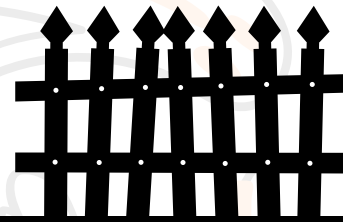


**Väderstad**  
**17885 Hwy 13**  
**Wahpeton, ND 58075**  
**701-642-2621**  
**[www.vaderstad.com](http://www.vaderstad.com)**

A SPOOKY

# MIX & MINGLE

business showcase



OCTOBER  
13<sup>th</sup>

WAHPETON  
EVENT CENTER

5<sup>pm</sup>  
to  
7:30<sup>pm</sup>

*Cash bar and light hors d'oeuvres beginning at 5:00 until gone.  
Grand prize drawing for a quarter beef and a small chest freezer. (Must be present to win)*

**TICKETS:**  
**\$10 IN ADVANCE**  
**\$15 AT THE DOOR**

WAHPETON BRECKENRIDGE

# CHAMBER BUCKS



*shop local. eat local. spend local. enjoy local*

The Chamber Bucks Program is getting an exciting new update for 2022. Chamber Bucks will now be distributed as an actual check that businesses will be able to deposit and will eliminate the need to request reimbursement from the Chamber office. Watch your email for more details coming soon.

The Wahpeton Breckenridge Chamber of Commerce is happy to offer the Chamber Bucks Program to the Twin Town Communities. The Chamber Bucks Program is designed to keep dollars local. They are great as employee incentives/rewards, giveaways or gifts from friends and family. Anyone can buy Chamber Bucks. They can be purchased at the Wahpeton Breckenridge Chamber of Commerce office in \$5, \$10 and \$20 denominations and used for goods and services at participating businesses in the Twin Towns.

#### **WHERE CAN I USE CHAMBER BUCKS?**

Chamber Bucks can be used for products and services at participating chamber member businesses in Wahpeton and Breckenridge. Please scan the QR Code below to view all participating members.

#### **HOW DO I USE CHAMBER BUCKS?**

Customers will redeem Chamber Bucks at participating businesses toward a single purchase of equal or greater value. They are not redeemable for cash. After you accept a valid Chamber Buck at your place of business from a customer for goods and services, you may go ahead and cash the Chamber Bucks just as you would any check. This is an exciting change to our program.

#### **WHERE CAN I BUY CHAMBER BUCKS?**

Chamber Bucks can be purchased at the Wahpeton Breckenridge Chamber of Commerce office during regular business hours.

#### **HOW DO I BECOME A PARTICIPATING BUSINESS?**

To become a participating business, you need to be a member in good standing of the Wahpeton Breckenridge Chamber of Commerce. There is no charge for being a participating business. This program is offered as a benefit of your chamber membership.



**Wahpeton  
Breckenridge**

CHAMBER OF COMMERCE

1505 11th St. N. | Wahpeton, ND 58075  
701-642-8744 | [lisa@wbchamber.net](mailto:lisa@wbchamber.net)  
[www.wbchamber.net](http://www.wbchamber.net)

**SCAN THE CODE TO VIEW  
PARTICIPATING  
CHAMBER BUSINESSES**



# Advertise on the Chamber Digital Sign!

**YOU'VE DRIVEN BY OUR AWESOME  
DIGITAL SIGN ON 11TH AND WANT  
TO ADVERTISE ON IT?**

**Now you can!**

**Available to Chamber Members only**



**Wahpeton  
Breckenridge**

**CHAMBER OF COMMERCE**

---

\$175.00 - 2 weeks

\$300.00 - 4 weeks

**Use your design or we will help you make one.**

We will continue to run Member logos throughout the year as  
a perk of being a member.

**(701) 642-8744**

Please call, email or stop by the Chamber to  
start advertising your business!



YOU'RE INVITED

# BUSINESS PITCH CHALLENGE SOCIAL

## *Semi-Finalist Announcement*

The pitches are in and the applications have been reviewed! We will be announcing the semi-finalist candidates that will be moving on to Phase 2 of the Wahpeton Business Pitch Challenge. Find out what great ideas have been pitched for our amazing community. What does Phase 2 of the Challenge look like? Who will win the Community Prize Package valued at over \$28,000? Please join us for this fun social event!

*Join us*

---

**BOIS DE SIOUX GRILLE ROOM**  
**WEDNESDAY, OCTOBER 5**  
**SOCIAL - 5:00PM**  
**ANNOUNCEMENT - 5:30PM**

*A light meal will be provided until gone. Cash bar available.*





**Wahpeton  
Breckenridge**

**CHAMBER OF COMMERCE**



[www.wbchamber.net](http://www.wbchamber.net)

*events - calendar*

## Calendar of Events

For a complete list of community events please see our events calendar on our website at [www.wbchamber.net](http://www.wbchamber.net). Also "like" the Wahpeton Breckenridge Facebook page for the most complete list of updates and announcements.

## CONTACT US

Wahpeton Breckenridge Area Chamber of Commerce  
1505 11th Street N  
Wahpeton, ND 58075

Phone - 701-642-8744  
Fax - 701-642-8734

Lisa Kunkel - Executive Director  
[lisa@wbchamber.net](mailto:lisa@wbchamber.net)  
Allison Karlgaard - Executive Assistant  
[allison@wbchamber.net](mailto:allison@wbchamber.net)

[WWW.WBCHAMBER.NET](http://WWW.WBCHAMBER.NET)



# Teen Friends of the Library

*3:30-5:00 PM on the 4th Tuesday of the Month  
(beginning January 25th, 2022)*

Hey teens, you're in charge! Join the Teen Friends of the Library group at the Breckenridge Public Library. Gather with other teens aged 11-18 to plan activities, run your own library programming, and practice leadership skills. An adult advisor will be present, but the direction of the group will be up to you.



**BRECKENRIDGE  
PUBLIC LIBRARY**  
A BRANCH OF LAKE AGASSIZ REGIONAL LIBRARY  
205 7th St N • 218-643-2113



*This program is  
sponsored by the Friends  
of the Breckenridge  
Public Library*

# JOIN US FOR STORYTIME

Thursdays at 10:30 AM



Find Us Here:

Breckenridge Public Library

205 7th St N.

218-643-2113 | [breckenridge@larl.org](mailto:breckenridge@larl.org)



**LAKE AGASSIZ  
REGIONAL LIBRARY**

# BUSINESS

For

# SALE

## indigo

life + style

BE YOUR  
OWN BOSS

INDIGO IS AN ESTABLISHED  
WOMEN'S APPAREL AND GIFT  
BOUTIQUE IN WAHPETON, ND

For financial information  
Contact Mickie Mohs

701.591.0169



Your dreams are waiting for your courage to catch up

FREEDOM'S PEOPLE'S CHOICE AWARDS

# You're Invited

ENTERTAINMENT BY

## THE FRONT FENDERS

OCTOBER 6, 2022

AVALON EVENTS CENTER

2525 9th Ave S Fargo, ND

Cocktail hour starting at 5:30

Dinner and Awards at 6:15

**TICKETS \$75**

Call 800-450-0459 to reserve a ticket  
or go to [www.freedomrc.org](http://www.freedomrc.org) for the  
eventbrite link!




*The Premiere Leader Of Disability Rights In The Region.*



Follow us on Facebook  
and Instagram





**Chocolate Chocolate Day  
& Used Book Sale  
Thursday, Oct. 13th  
12:00-5:00 PM**



Sponsored by the Friends of the  
Library. All funds raised support  
the Leach Public Library

## Reasons to join The Business Connection

1. The outside referrals I get from members. I've heard "(TBC member) recommended you" more times than I can count!
2. When I add new products and services, I get to tell 20+ women at one time.
3. The Night of Indulgence event held in November - a great way to market your business to the community.
4. Network with other smart & talented business women.
5. The opportunity to support local business.
6. Grow your business.
7. Name recognition in the community.
8. Fun members!

### **For more info:**

Find us on Facebook [TheBusinessConnection W/B](#)  
or contact Sheri Friederichs - President  
(701) 403-7164





Hey Wahpeton! Anytime Fitness in Wahpeton is NOW under new ownership and they OFFER so much to achieve your goals. We have partnered with Anytime Fitness Wahpeton and by scanning this QR code, you can enter in to win a FREE YEAR with them. Everyone who enters ALSO gets a \$100 gift card to the gym just for entering. Make sure you share, tag, and comment all your family and friends to get entered in. Also make sure you scan the QR code and get your name entered!





ENTER FOR A CHANCE TO

WIN A FREE

— 1 YEAR —

MEMBERSHIP

RECEIVE A FREE \$50 GIFT CARD TO OUR CLUB JUST FOR ENTERING



*Let's make* HEALTHY HAPPEN



Friendly staff



Try us free



Always open



Join one. Join all.



**VERTIN-MUNSON**  
FUNERAL & CREMATION SERVICE

**BRENDA KLOSTERMAN**  
*Pre-Arrangement Specialist*

Cell: (701) 640-0840  
Email: Brenda@VertinMunson.com



## BRENDA KLOSTERMAN ADVANCED FUNERAL PLANNER

Brenda specializes in pre-arranged funeral and cremation planning and provides individuals and families with opportunities to explore their final wishes. She also provides valuable information regarding options to set funds aside for burial and cremation expenses.

Brenda offers the following expert advice:

**The first step** in planning ahead is organizing your vital information and putting your wishes in writing. Having all of these details in one place – and on file with your funeral professional – is of tremendous assistance to your family. It is a gift of love only you can give.

Your file should include:

- Copies of all important documents such as your life insurance policies, birth certificate, marriage license, and military records. Remember, do NOT keep these copies in your safe deposit box because oftentimes the contents are not available to your loved ones until long after they're needed.
- Important biographical details that will help tell your life story. This information will save your family time and added stress.
- Your preferences for services. Whether traditional or non-traditional, there are many details to consider such as flowers, music, favorite readings or scripture, and casket or urn selection. Besides removing this responsibility from your family, it also gives you the opportunity to design the unique service you want, which can be especially meaningful and healing for loved ones.

**The second step** is determining your pre-funding options. We plan and set aside funds for many things in life, including vacations and retirement. Why not do the same for the inevitable? Death has no schedule, and it can create the burden of unexpected expenses for family members. Setting aside funds for your funeral arrangements ensures that your final wishes can be carried out while allowing loved ones to focus on their journey through grief.

Brenda can provide you with the information you need to make informed and thoughtful decisions. She is available to meet with business groups, individuals and families by appointment and can be reached by calling her at 701-640-0840.



**JOSEPH VERTIN & SONS**  
FUNERAL HOME  
BURIAL - CREMATION - MONUMENTS

303 5th St. N • Breckridge, MN 56520  
www.JosephVertinAndSons.com

**BRENDA KLOSTERMAN**  
*Pre-Arrangement Specialist*

Cell: (701) 640-0840 • Office: (218) 643-5593  
Fax: (218) 641-5831  
E-mail: brenca@josephvertinandsons.com



# **DID YOU KNOW THAT THE LEACH HOME OFFERS ADULT DAY CARE?**

## **Adult Day Care**

Are you a full-time caregiver who could use a little break? Worried about leaving your loved one home alone during the day? We can help! The Leach Home now offers Adult Day Care. Provided are, a fully furnished, private room, including a refrigerator, television, and private bathroom, along with fully staffed medical professionals. We have daily rates, so you can pick and choose the days. No lease or contracts to sign! Stop by anytime. The doors are always open. We would love to visit with you and help create a plan for your needs. Please check out our website at the link provided below.

<https://www.theleachhome.org>

**Fully staffed  
medical  
professionals**

**Full day of activities  
including exercise**

**Three meals  
and three snacks  
daily**

**Two resident cats for  
lap hugs if desired**

**Down time for cat  
naps if needed**

**LEACH HOME**

**714 4<sup>TH</sup> ST N**

**Wahpeton ND**

**701-642-4233**

**[llndcay@theleachhome.org](mailto:llndcay@theleachhome.org)**

NORTH DAKOTA STATE COLLEGE OF SCIENCE

# Performing Arts

2022-2023 SCHEDULE

**Fall Music Concert**

October 25 • 7:30 p.m.

**Holiday Music  
Concert**

December 6 • 7:30 p.m.

**Spring Drama  
Production**

March 27-31

**Spring Music Concert**

April 18 • 7:30 p.m.

**Wildcat Singers &  
Jazz Band Concert**

May 2 • 7:30 p.m.

**NDSCS**



@NDSCSarts



@NDSCS.PerformingArts

# Tai Ji Quan

## Moving For Better Balance Classes

Ronda Gripenrog, Family and Community Wellness Extension Agent



Fall is a great time to think about fall prevention!



**Register Now!**

### What you will learn?

- ✓ Balance skills
- ✓ Good body alignment
- ✓ Coordinated movements in a circular, flowing motion

### Who should attend?

- ✓ Able to walk (canes and walkers are fine)
- ✓ Interested in improving balance, flexibility, and strength



Requests for accommodations related to disability should be made to Ronda Gripenrog at 701.642.7793 by August 31, 2022.

Mondays, Wednesdays and Fridays  
Beginning

Wed. Sept. 7, 2022

9:30 – 10:30 a.m.

For 8 weeks

- ✓ Last class will be Friday, Nov. 4
- ✓ No class Sept. 30 & Oct. 3
- ✓ May attend as many times during the week as you can
- ✓ Best results are attained by attending at least 2 times a week

### Location:

Wahpeton Community Center  
304 South 5<sup>th</sup> St.  
Wahpeton, ND

**Cost:** Free

### To register contact:

Ronda Gripenrog  
701.642.7793  
ronda.gripenrog@ndsu.edu

# Bois de Sioux Adventure Area

Location: Pope Street, south of Favorites Deli & V-Mart off Minnesota Ave (grass clipping/leaf drop off site).

\*\*USE CAUTION ON TRAILS: Slippery & Uneven Ground

\*\*Do NOT use trails when wet



- ★ Trail Head
- Entrance to trails
- Entrance to Park
- Entrance to Boat launch
- Railroad Tracks



**DONATIONS NEEDED** for lighting, signage, parking, maintenance of trails and additional amenities!

Facebook: Bois de Sioux Adventure Area

[www.breckenridgemn.net/bois-de-sioux-adventure-area](http://www.breckenridgemn.net/bois-de-sioux-adventure-area)



Open to the Public – All Ages Welcome!

Concessions  
& Bake Sale

Games

Prizes

Crafts

Pack 352  
**Halloween  
Carnival  
Fundraiser**  
2022

Costumes  
Encouraged

**Saturday,  
October 8**

**11 a.m. - 3 p.m.**

Wahpeton Community Center  
*Freewill Offering to Enter*





**The Red Door Art Gallery is pleased to offer**

## **BASIC WATERCOLOR**

With Instructor Ellen Jean Diederich

**Tues-Thurs, October 11-13:**

**9:30AM -4:00PM (1 hour lunch break) &**

**Friday October 14, 10:00AM -1:00PM**



***\$99 per person for the four-day workshop***

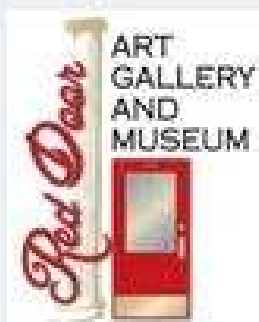
*418 Dakota Avenue, Wahpeton, ND*

*For more information & to register: Online at [http://](http://www.reddoorgallerywahpeton.com/events-and-classes.html)*

*[www.reddoorgallerywahpeton.com/events-and-classes.html](http://www.reddoorgallerywahpeton.com/events-and-classes.html); email [rdag@midconetwork.com](mailto:rdag@midconetwork.com), or call 701-591-1010*

In this four-day workshop Ellen shares her love of watercolor! She will help participants understand, enjoy and grasp the particulars of watercolor and how to work with it. She explores basic shapes, light, variations to painting skies, perspective and color mixing. Students are welcome to paint any subject they are interested in.

A supply list will be provided, but participants are encouraged to start with the supplies they already have!



Watch Ellen's 20 minute video for supply tips! [www.givinity.com/workshop](http://www.givinity.com/workshop)

*It is recommended that students have finished at least one watercolor prior to taking this class.*

4th Annual

# LADIES ROOSTER ROUNDUP

Hosted by the Red River Area Sportsmen's Club

*Pheasant Hunt*

**Saturday & Sunday,  
October 15 & 16**

**FREE**

Sponsored By:



2-day event including instruction, hunting, lodging and meals. Limited spots available.

## Registration

Application can be found by scanning the QR code or at [RRASC.net/Downloads](http://RRASC.net/Downloads).  
Call for information 701-899-2636.



American Association of University Women - AAUW  
Wahpeton Affiliate

*presents*

# MEET THE CANDIDATES

A televised forum with State & Local Candidates on  
Tuesday October 18 2022 Public Access Channel 12

Location - Wahpeton City Hall  
1900 4th Street North

**5:30 pm Doors Open**

**6:15 pm FORUM Begins**

**9:00 pm Wrap Up**

US Senate & House Candidates  
running for office are invited to  
attend including all ND District  
25 Candidates, County  
Commission, and Sheriff races

Questions or special assistance,  
contact Wahpeton AAUW  
at 701-640-3391 or message  
us on Facebook



Like us on Facebook:  
AAUW Wahpeton



**Red River Area Sportsmen's Club**



**33rd Annual  
SPORTSMEN'S SMOKER**



**Saturday, October 22**

**Wahpeton Community Center • Doors open at 5 p.m.**

**OPEN TO THE PUBLIC – Bring your friends for a night of fun!**

**GUN BOARDS, RAFFLES & GAMES!**

**LADIES' RAFFLE  GENERAL RAFFLE  MEAT RAFFLES**



**\$20 TICKET**



**FREE Wild Game Chili & Stew Until Gone**

**Early Bird tickets available until Thursday, October 20.**

**Early Bird ticket entered into an additional gun raffle.**


**Call Curt 701-640-3857, Rich 701-640-5136 or Kelly 218-766-1396.**

**Must be 18 or accompanied by a parent or guardian.**

Proceeds are used to support local youth programs,  
wildlife projects and the Chahinkapa Zoo.



**[www.RRASC.net](http://www.RRASC.net)**



**O BELOW  
ZERO  
WRESTLING**

**SUNDAY, OCTOBER 23**

**WAHPETON EVENT CENTER**

**ALL AGES EVENT, CHILDREN 5 AND UNDER GET IN FREE**

# TRUNK OR TREAT



Come Check Out The  
Wahpeton/Breckenridge  
EMERGENCY VEHICLES!



wednesday  
**OCT 26**  
**6-8 PM**

free popcorn & hot cocoa!

HARVEST OUTREACH 1155 21 AVE N WAHPETON



**CHAHINKAPA ZOO**



**ZOOBOO**

**OCTOBER 30TH**

**4:30-6:30 PM**

**\$5 PER  
PERSON**

**TRICK  
OR  
TREAT**



# Women & Words



**Saturday, November 12, 2022**

**10:00 am - 3:00 pm**

**Join us for a day of book readings and talks from a selection of women authors. Get to know their process, ask questions, and have your book signed. A detailed schedule of authors will be coming soon. Stay tuned!**





The Business Connection  
"Connecting Women Through Business"

Presents the 15th Annual

# Night of Indulgence

A Country Christmas



**TUESDAY, NOVEMBER 15TH 2022**

**4:30 - 7:30PM**

**THE WAHPETON EVENT CENTER**

**995 21ST AVENUE NORTH WAHPETON, ND**

**ADMISSION: \$10**

**DOOR PRIZES & CHANCES TO WIN GRAND PRIZES**

**COMPLIMENTARY APPETIZERS ♦ CASH BAR**

**BRING YOUR FRIENDS!**

# ANDY ZIEGELMAN

## MEDICAL BENEFIT

HOSTED BY FAMILY AND FRIENDS

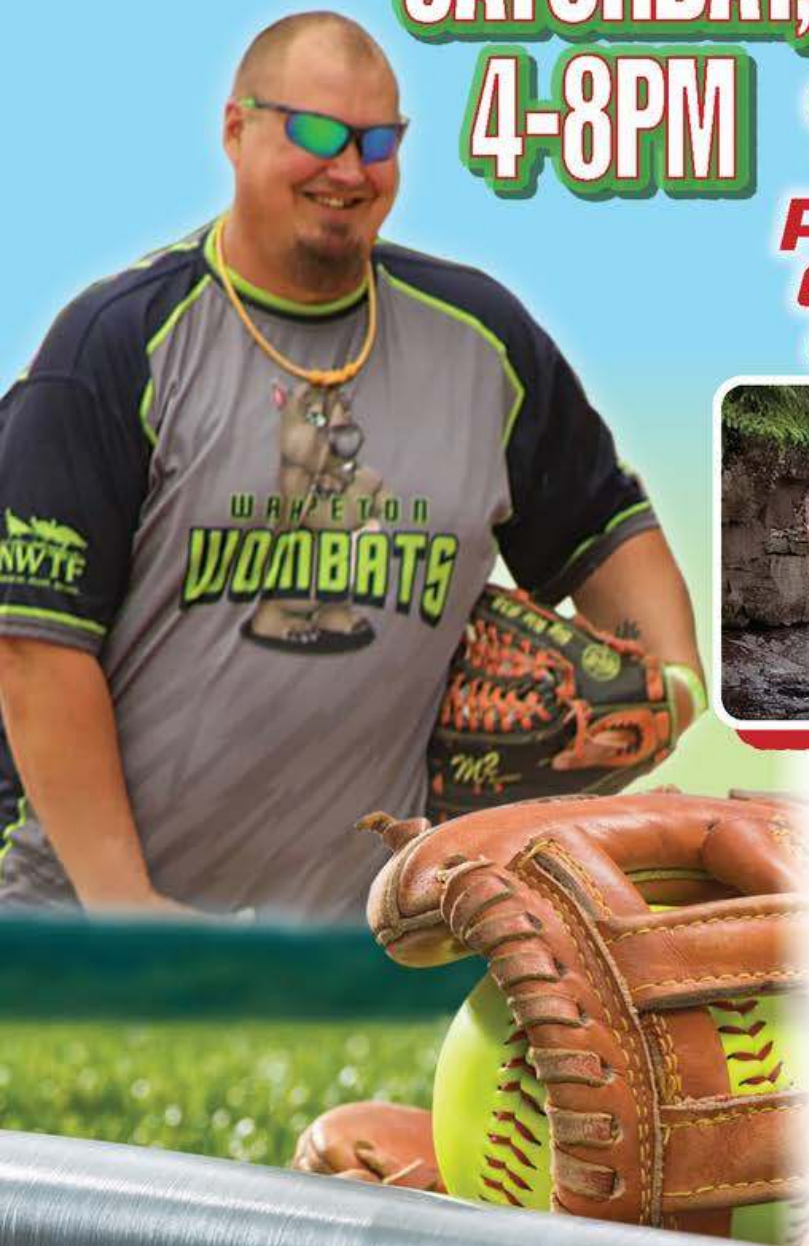
**SATURDAY, NOVEMBER 26TH**

**4-8PM**

**GREAT BEND FIRE HALL**

\*\*\* 201 MAIN ST, GREAT BEND, ND 58075 \*\*\*

**PULLED PORK MEAL  
(FREE WILL OFFERING)  
& SILENT AUCTION**



Andy was diagnosed with cancer late last year. He has not been feeling well the past couple months, ER Trips, hospital stays. Andy had surgery on 9/21 to remove scar tissue from a previous surgery. Cancer nodules were found around the stomach during this surgery and Andy is now being referred to Mayo Clinic. Andy has not been able to work.

His family and friends are coming together to help Andy and Carmen financially during this difficult time.

Follow "Andy Ziegelman Benefit" on Facebook for updates

Monetary Donations can be made to:  
Andy Ziegelman C/O Diana Hermes  
Po Box 473 • Hankinson, ND 58041

Donated items such as gift baskets, gift certificates, gift cards, etc., from individuals or area businesses are welcomed and appreciated.

If you have a donation to be picked up contact:

Diana Hermes 701-640-9925    Amy Cookman 701-899-2784    Jennifer Muller 701-640-5342    Jody Frankl 701-403-5947

[www.gofundme.com/f/andy-ziegelman](http://www.gofundme.com/f/andy-ziegelman)

*Building better  
communities  
by fighting against food  
insecurity*

**ONE CLIENT'S STORY**

No two Food Pantry clients are alike, but the need is real. We'd like to share the story of one of our clients, John.

Late one Monday afternoon we received a call from John, a single dad of four children and the sole supporter of his family. It was almost the end of our operating hours and he asked how long we would be open.

He went onto explain that he wanted to cook supper for his family that night, but had used all his groceries the previous day. Fortunately he would be paid the next day, but needed to feed his family that night.

John arrived at the pantry before closing time and a volunteer guided him around the pantry helping him with the food selection. John expressed his thankfulness many times to the volunteers that evening. He was so happy to be able to go home that evening and feed his family.

John seldomly uses the Food Pantry services and has done so only when his needs are the greatest.

Many of our clients comment "I didn't think I would ever be here".



**RICHLAND WILKIN  
EMERGENCY FOOD PANTRY**  
699 8th Ave. S  
Wahpeton, ND 58075

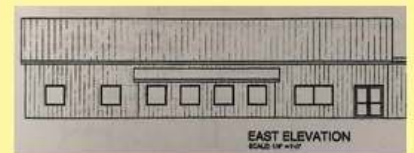
701-642-1921

[rwfoodpantry@outlook.com](mailto:rwfoodpantry@outlook.com)

[Facebook.com/rwfoodpantry](https://www.facebook.com/rwfoodpantry)



***"EXPANDING THE  
FIGHT AGAINST  
FOOD INSECURITY"***



## WHAT IS THE RWEFP?

- ◆ The **Richland Wilkin Emergency Food Pantry** provides an emergency food supply to those in need in the 20 towns and rural areas of Richland County, ND Wilkin County, MN.
- ◆ The **RWEFP** has served the community for almost 40 years.
- ◆ The **RWEFP** is located on the south side of Wahpeton.
- ◆ The **Food Pantry** is open to serve clients 4 days a week.

## WHO DO WE SERVE?

- ◆ Family Units
- ◆ College students
- ◆ Senior citizens
- ◆ K-12 students
- ◆ People with health issues
- ◆ Working families experiencing unexpected circumstances
- ◆ Anyone in need



## Expanding the fight against food insecurity

### RWEFP QUICK FACTS

- ◆ We served close to 500 clients a month in 2021.
- ◆ Over 300 students receive weekend food through the Backpack Program.
- ◆ Over 80 tons of food was distributed in 2021 (which equals the weight of an African elephant every month!).
- ◆ Our mobile unit serves Fairmount, Lidgerwood and Rothsay once per month.
- ◆ We operate with only one part-time paid employee and over 30 volunteers.
- ◆ Funding comes from grants, business donations and donations from individuals.



Current warehouse

### FOOD PANTRY ADDITION & REPAIR PROJECT

Planning for a building update began in 2018 and includes these plans:

- ◆ **Construction** of an addition to the current pantry to include space for food distribution, operations of the school backpack program and warehouse space for our food supply.
- ◆ **Demolition** of the current storage building/shed that has failed.
- ◆ **Repair** of the roof on the existing pantry so it can be converted to warehouse space.

### HOW ARE WE FUNDING THE EXPANSION PROJECT?

- ◆ We have secured some grant funding and donations.
- ◆ We are actively seeking other available grants and funding sources.
- ◆ We have been setting funds aside.
- ◆ We are asking community businesses and individuals for donations.

**WE ONLY NEED TO RAISE \$150,000 IN ADDITIONAL FUNDS TO MEET OUR GOAL!**

### WITH YOUR HELP THE RWEFP CAN:

- ◆ Address safety concerns for all clients & volunteers in our facilities.
- ◆ Comply with ADA standards.
- ◆ Create adequate & safe storage.
- ◆ Add a demonstration kitchen/classroom to provide clients with additional cooking and nutrition information.
- ◆ House our programs in one location.

## DONOR LEVELS

\$1000 Plus ..... Dessert  
\$500 - 999 ..... Dinner  
\$100 - 499 ..... Lunch  
\$ 20 - 99 ..... Breakfast  
Under \$20 ..... Snack



## DONOR LEVELS

\$1000 Plus ..... Dessert  
\$500 - 999 ..... Dinner  
\$100 - 499 ..... Lunch  
\$ 20 - 99 ..... Breakfast  
Under \$20 ..... Snack



## DONOR LEVELS

\$1000 Plus ..... Dessert  
\$500 - 999 ..... Dinner  
\$100 - 499 ..... Lunch  
\$ 20 - 99 ..... Breakfast  
Under \$20 ..... Snack



**BUILDING FUND  
DONATION FORM**

Name(s): \_\_\_\_\_

\_\_\_\_\_

Address: \_\_\_\_\_

City: \_\_\_\_\_

State: \_\_\_\_\_ Zip: \_\_\_\_\_

Phone: \_\_\_\_\_

Email: \_\_\_\_\_

Date: \_\_\_\_\_

Total Donation \$ \_\_\_\_\_

I wish my donation to be anonymous  
 Yes  No

Cash  Check Ck. # \_\_\_\_\_

**BUILDING FUND  
DONATION FORM**

Name(s): \_\_\_\_\_

\_\_\_\_\_

Address: \_\_\_\_\_

City: \_\_\_\_\_

State: \_\_\_\_\_ Zip: \_\_\_\_\_

Phone: \_\_\_\_\_

Email: \_\_\_\_\_

Date: \_\_\_\_\_

Total Donation \$ \_\_\_\_\_

I wish my donation to be anonymous  
 Yes  No

Cash  Check Ck. # \_\_\_\_\_

**BUILDING FUND  
DONATION FORM**

Name(s): \_\_\_\_\_

\_\_\_\_\_

Address: \_\_\_\_\_

City: \_\_\_\_\_

State: \_\_\_\_\_ Zip: \_\_\_\_\_

Phone: \_\_\_\_\_

Email: \_\_\_\_\_

Date: \_\_\_\_\_

Total Donation \$ \_\_\_\_\_

I wish my donation to be anonymous  
 Yes  No

Cash  Check Ck. # \_\_\_\_\_

**Richland Wilkin Emergency  
Food Pantry  
Building Fund  
699 8th Ave. S  
Wahpeton, ND 58075**

**Richland Wilkin Emergency  
Food Pantry  
Building Fund  
699 8th Ave. S  
Wahpeton, ND 58075**

**Richland Wilkin Emergency  
Food Pantry  
Building Fund  
699 8th Ave. S  
Wahpeton, ND 58075**