



Wahpeton Breckenridge

CHAMBER OF COMMERCE

Chamber Board of Directors

Jodi Hendrickson - President

Edward Jones

Edd Goerger - Vice President

Heartland Insurance

Jim Cornelius - Secretary

Benedictine Living Community

Chris Kappes - Director

Circle of Nations

Angela Cruff - Director

Blue Cross Blue Shield

Becky Dockter - Director

OSPTI

Kory Kaste - Director

SVEDA

Tana Erbes - Director

NDSOS

Mary Wolfgram - Director

Twin Town Villa

Gail Grant - Director

CHI St. Francis Health

Staff

Lisa Kunkel - Executive Director

Allison Karlgaard - Executive Assistant

Holiday Shop Local Promotions

It's beginning to look a lot like Holiday shop local promotions. It's that time of year when we begin our Keep the Cheer Here campaign. Supporting our area retail stores and restaurants keeps your dollars in our community and stimulates the local economy.

Our first promotion will be on Small Business Saturday, November 26th. Shop or dine at ANY Wahpeton or Breckenridge small business. Spend \$10 or more, write your name and phone number on the back of the receipt and drop it off at the Chamber office at 1505 11th St N in Wahpeton. Please use the dropbox on the outside of the building after hours. We will draw for two prizes of \$500 each in Chamber Bucks (one from Breckenridge receipts and one from Wahpeton receipts). Receipts need to be from Saturday, November 26th only.

For our second promotion, Keep The Cheer Here beginning November 28th, stop by any participating business, spend a minimum of \$20 and register at the business for a chance to win \$2,500 in Chamber Bucks. In the month of December we will feature a different business each day and they will draw from their entries to give away \$100 in Chamber Bucks. On December 23rd, we will do a grand prize drawing for \$300 in Chamber Bucks from all the entries collected by the participating businesses.

To find out more about these these promotions and to keep up to date on everything happening in the Twin Towns go to our website at www.wbchamber.net or follow us on Facebook. Thank you for supporting the Chamber and our communities.



Join our Team

We are currently looking to add more ambassadors to our group. The Twin Town Ambassadors meet the 2nd Tuesday of each month at 8:30 am at the chamber office. Being an ambassador is a great way to learn more about what is happening in the businesses in our community.

If you would like to join this fun, energetic group and help us celebrate the milestones of our business community, please feel free to contact us and we'd be happy to give you more information.

Twin Town Ambassadors

Amanda Crouse - President

Bremer Bank

Diana Hermes - Vice President

Daily News

Wendy Kahler - Secretary

Red River Human Services

John Nyquist

Edward Jones

Carla Broadland

City of Wahpeton

Brittany Myhra

Chahinkapa Zoo

Mary Wolfgram

Twin Town Villa

Kory Kaste

SVEDA

Raychel Wallender

Schmitt's Plumbing, Heating & Sheetmetal, Inc.

Brittany Finnie

Nielsen Electric TV & Appliance Center

Mitch Ronan

Bell Bank

Angie Cleveland

CAPLP

Jenna Lovgren

Red River Communications

Stevin Lipp

Country Financial

Lindsay Auwarter

Leach Home

Mandy Steinberger

Breckenridge Family Comm. Center

Tony VanDyke

Thrivent Financial

Farah Grey

Econo Foods

Judy Comings

Healing Arts Chiropractic

Ashley Mohs

First Community Credit Union

Julie Rosenberg

Essentia Health

Chelshey Grandstrand

Richland Title

Rhonda Thiel

QSciences

Amber Bogenreif

Red River Valley & Western Railroad

Welcome To Our New Chamber Members



River of Life
Community Fellowship

Hope, Purpose, Community

River of Life Community Fellowship, believes Jesus Loves you! This single belief calls us together as a community, and sends us into our world with hope and purpose. River of Life is an exciting and thriving fellowship located in Breckenridge Minnesota. It is a place where your past will never define your future. It's a place where you encounter people with real needs just like yourself. We invite you to come in at your own pace and experience the life that awaits you, and to realize ... Jesus loves you more than you will ever know.



River of Life Community Fellowship
739 Highway 75 North
Breckenridge MN 56520
218-651-2003
<https://rolfellowship.com>

Welcome To Our New Chamber Members



**Licensed Group Childcare max 11 kids 0-12 years old
Fun loving environment for your child to grow**



**L&M Busy Bee's Daycare
Wahpeton, ND
701-403-4345**

lmbusybeesdaycare@gmail.com

<https://www.facebook.com/LnMBusyBeesDaycare>

Welcome To Our New Chamber Members



Edward Jones

Using an established process, I partner with my clients to build personalized financial strategies designed to achieve their unique goals. I take the time to get to know my clients, what is important to them and the legacies they wish to leave for their loved ones. I then work with my clients on putting a plan in place around their specific goals, needs and timelines. Once the strategies are implemented, I partner with my clients through consistent communication and regular meetings to address any needs or changes in their situations and help keep them on track through the inevitable curveballs that life throws their way. In order to put a more comprehensive plan in place for my clients, I regularly collaborate with a team of CPAs, attorneys and other trusted professionals, always maintaining client confidentiality.

Edward Jones

INVESTMENTS

Ashley Gerner

Financial Advisor

701-671-8028

www.edwardjones.com



Edward Jones - Ashley Gerner

7925 180th Ave. S.E.

Wahpeton, ND 58075

701-671-8028

<https://www.edwardjones.com/us-en/financial-advisor/ashleygerner>

Welcome To Our New Chamber Members



BOY SCOUTS
OF AMERICA®

The Boy Scouts of America has provided a comprehensive youth development program for communities across America since 1910.

The Northern Lights Council is chartered by the National Council, Boy Scouts of America to administer BSA programs within our assigned territory, which covers the entire state of North Dakota, 18 counties in northwest Minnesota, and 2 counties each in Montana and South Dakota. The council was incorporated in 1974 following a merger of four Boy Scout Councils in North Dakota and northwestern Minnesota.



Northern Lights Council - Boy Scouts of America
P.O. Box 1131
Alexandria, MN 56308
320-760-5605
www.nlcbsa.org



**Business
Spotlights**

The Wahpeton Breckenridge Chamber
Ambassadors would like to Welcome
Ellingson & Got It From My Mama



Ellingson

7925 180th Ave. SE

Wahpeton, ND 58075

Brad Abel: 701-640-6064 or babel@ellingsoncompanies.com

**Cindy Schreiber-Beck: 701-899-3232 or
cindy@ellingsoncompanies.com**



Got It From My Mama

gotitfrommymama.commentsold.com/store



**Business
Spotlights**

The Wahpeton Breckenridge Chamber
Ambassadors would like to Welcome
Midwest Fire & Safety



**Midwest Fire & Safety
Brent Peterson
209 1st. St. NW
Ortonville, MN 56278
320-305-1202
midwestfiresafety@outlook.com**

WAHPETON BRECKENRIDGE

CHAMBER BUCKS



shop local. eat local. spend local. enjoy local

The Chamber Bucks Program is getting an exciting new update for 2022. Chamber Bucks will now be distributed as an actual check that businesses will be able to deposit and will eliminate the need to request reimbursement from the Chamber office. Watch your email for more details coming soon.

The Wahpeton Breckenridge Chamber of Commerce is happy to offer the Chamber Bucks Program to the Twin Town Communities. The Chamber Bucks Program is designed to keep dollars local. They are great as employee incentives/rewards, giveaways or gifts from friends and family. Anyone can buy Chamber Bucks. They can be purchased at the Wahpeton Breckenridge Chamber of Commerce office in \$5, \$10 and \$20 denominations and used for goods and services at participating businesses in the Twin Towns.

WHERE CAN I USE CHAMBER BUCKS?

Chamber Bucks can be used for products and services at participating chamber member businesses in Wahpeton and Breckenridge. Please scan the QR Code below to view all participating members.

HOW DO I USE CHAMBER BUCKS?

Customers will redeem Chamber Bucks at participating businesses toward a single purchase of equal or greater value. They are not redeemable for cash. After you accept a valid Chamber Buck at your place of business from a customer for goods and services, you may go ahead and cash the Chamber Bucks just as you would any check. This is an exciting change to our program.

WHERE CAN I BUY CHAMBER BUCKS?

Chamber Bucks can be purchased at the Wahpeton Breckenridge Chamber of Commerce office during regular business hours.

HOW DO I BECOME A PARTICIPATING BUSINESS?

To become a participating business, you need to be a member in good standing of the Wahpeton Breckenridge Chamber of Commerce. There is no charge for being a participating business. This program is offered as a benefit of your chamber membership.



**Wahpeton
Breckenridge**

CHAMBER OF COMMERCE

1505 11th St. N. | Wahpeton, ND 58075
701-642-8744 | lisa@wbchamber.net
www.wbchamber.net

**SCAN THE CODE TO VIEW
PARTICIPATING
CHAMBER BUSINESSES**



Advertise on the Chamber Digital Sign!

**YOU'VE DRIVEN BY OUR AWESOME
DIGITAL SIGN ON 11TH AND WANT
TO ADVERTISE ON IT?**

Now you can!

Available to Chamber Members only



**Wahpeton
Breckenridge**

CHAMBER OF COMMERCE

\$175.00 - 2 weeks

\$300.00 - 4 weeks

Use your design or we will help you make one.

We will continue to run Member logos throughout the year as a perk of being a member.

(701) 642-8744

Please call, email or stop by the Chamber to
start advertising your business!



**Wahpeton
Breckenridge**

CHAMBER OF COMMERCE

DIGITAL SIGN AD AGREEMENT

Advertise with us on our Digital Sign! Each slide runs for the duration of the contract for 7 seconds per 42-48 second rotation, 24 hours a day/7 days a week. This means your ad is seen at least once a minute with over 700 views 8am-8pm. That's a ton of exposure!!

Business/Organization Name: _____

Contact Person: _____

Address: _____

Telephone: _____

Email: _____

AGREEMENT DURATION (CIRCLE ONE): TWO WEEKS: \$175 FOUR WEEKS: \$300

START DATE: _____ **END DATE:** _____

MESSAGE (8 - 10 WORDS): _____

CAN YOU PROVIDE A HIGH RESOLUTION GRAPHIC OR LOGO TO BE DISPLAYED (CIRCLE ONE)? YES NO

SIGNED CONTRACT AND PAYMENT IS DUE IN FULL BEFORE THE AD RUNS. MAKE CHECKS PAYABLE TO WB CHAMBER. THE DIMENSIONS FOR THE SLIDE ARE 750 X 360 PX OR GREATER THAN 30 KB FILE SIZE.

Signature: _____ Date: _____

Printed Name: _____

The Wahpeton Breckenridge Chamber of Commerce reserves the right to not publish any information, ads, content, etc. that does not follow our standards. We reserve the right to remove content alleged to be infringing, inappropriate, distasteful, misleading, incorrect, etc. without prior notice, at our sole discretion, and without liability to you. Staff time and resources are limited – we may not be able to accommodate all ad requests. These terms and conditions are applicable to you upon your accessing the website and/or contacting the chamber office. These terms and conditions, or any part of them, may be terminated by the chamber without notice at any time, for any reason. Please note that the following opportunities are only available to chamber members in good standing. I am committed to pay the entire amount for my selected duration of the ad, with no option available for early termination, and that there are no refunds.



**Wahpeton
Breckenridge**

CHAMBER OF COMMERCE

WEBSITE BANNER AD AGREEMENT

With thousands of monthly visitors, the Chamber's website is a great way to share your message with the areas leading professionals. Place your ad today on one of our most visited pages. It is very cost-effective and a fast way to market your products, services or events. Use this marketing method to drive traffic to your website and help build your search engine rankings.

Business/Organization Name: _____

Contact Person: _____

Address: _____

Telephone: _____

Email: _____

WEBSITE PAGE (CIRCLE ONE): LANDING PAGE: \$250/MO RELOCATION PAGE: \$200/MO SIGNATURE EVENTS PAGE: \$200/MO

START DATE: _____ **END DATE:** _____

MESSAGE (8 - 10 WORDS): _____

CAN YOU PROVIDE A HIGH RESOLUTION GRAPHIC OR LOGO TO BE DISPLAYED (CIRCLE ONE)? YES NO

SIGNED CONTRACT AND PAYMENT IS DUE IN FULL BEFORE THE AD RUNS. MAKE CHECKS PAYABLE TO WB CHAMBER. THE DIMENSIONS FOR THE SLIDE ARE 1170 X 150 PX.

Signature: _____ Date: _____

Printed Name: _____

The Wahpeton Breckenridge Chamber of Commerce reserves the right to not publish any information, ads, content, etc. that does not follow our standards. We reserve the right to remove content alleged to be infringing, inappropriate, distasteful, misleading, incorrect, etc. without prior notice, at our sole discretion, and without liability to you. Staff time and resources are limited – we may not be able to accommodate all ad requests. These terms and conditions are applicable to you upon your accessing the website and/or contacting the chamber office. These terms and conditions, or any part of them, may be terminated by the chamber without notice at any time, for any reason. Please note that the following opportunities are only available to chamber members in good standing. I am committed to pay the entire amount for my selected duration of the ad, with no option available for early termination, and that there are no refunds.

Congratulations.....

SEMI-FINALISTS

Miranda Nettum
THE HERD

Beth Loken
BULK

Michael Schwartz
BOIS DE SIOX BREW

Stacia Henningsen
THE SPORTS BARN

Amanda Fischer
DECOR & GIFT

Addison Barth
RAXE CO.

Lucinda Wallne
C.C'S LIFE SKILLS, QUILTING & RETREAT CENTER



Introducing



LIVE. WORK. PLAY. LEARN

Follow us! @SOUTHERNVALLEYLIFESTYLE



WWW.SOUTHERNVALLEYLIFESTYLE.COM

2022

ANNUAL BUSINESS Awards

Make your Nomination!

NOW ACCEPTING NOMINATIONS THROUGH MONDAY, DECEMBER 19

MARK WERRE COMMUNITY SERVICE AWARD

THE AWARD WAS ESTABLISHED IN 1991 BY THE WERRE FAMILY IN HONOR OF MARK'S LIFE OF COMMUNITY SERVICE. MARK WAS A 1966 GRADUATE OF WAHPETON HIGH SCHOOL. HE WORKED FOR THE U.S. PUBLIC HEALTH SERVICE. THIS AWARD RECIPIENT IS GIVEN TO A PERSON, PERSONS, GROUP OR ORGANIZATION WHO HAS DISPLAYED CONSPICUOUS SERVICE AND DEDICATION TO THE COMMUNITY. WE ARE SEEKING NOMINATIONS FOR THIS YEAR'S AWARD.

SPARK PLUG AWARD

THIS AWARD GOES TO A BUSINESS (USUALLY A NEW BUSINESS) OR A PERSON WHO HAS SHOWN AN EXTRA "SPARK OF ENTHUSIASM" FOR OUR COMMUNITY IN THE PAST YEAR THROUGH ACTIVITIES, PROACTIVE BUSINESS PRACTICES, OR FORMING POSITIVE RELATIONSHIPS THAT BENEFIT THE COMMUNITY.

BUSINESS OF THE YEAR

NOMINEE SHOULD INCLUDE THOSE BUSINESSES WHO HAVE DEMONSTRATED OUTSTANDING LEADERSHIP, BUSINESS ACUMEN, AND PROFESSIONALISM WITHIN OUR COMMUNITY. CRITERIA INCLUDE: 1. DEMONSTRATED SUCCESS IN AREAS INCLUDING EMPLOYMENT, SALES AND INNOVATION 2. DEDICATION TO QUALITY, CUSTOMER SERVICE, AND COMMITMENT TO EMPLOYEES 3. EVIDENCE OF CONTRIBUTION TO THE COMMUNITY AND COMMUNITY-ORIENTED PROJECTS 4. ADDITIONAL INFORMATION SUCH AS HURDLES OVERCOME, INNOVATIVE MANAGEMENT TECHNIQUES, PREVIOUS AWARDS WON, ETC.

NON-PROFIT OF THE YEAR

NOMINEES OF THIS COMMUNITY SERVICE AWARD SHOULD HAVE DISPLAYED INSPIRING VISION, FOSTERED COLLABORATION, AND EMBODIED COMMUNITY SERVICE AS DEMONSTRATED THROUGHOUT THEIR GOOD WORK WITHIN OUR COMMUNITY. CRITERIA INCLUDES 1. EVIDENCE OF CONTRIBUTION TO THE COMMUNITY THROUGH COMMUNITY-ORIENTED PROJECTS 2. PROVIDING PROFESSIONAL EXPERTISE OR PERSONAL TALENTS TO THE COMMUNITY 3. ENGAGING IN CIVIC AND/OR COMMUNITY ACTIVITIES THAT PROMOTE THE COMMUNITY, OUR RESIDENTS, BUSINESSES, AND EDUCATIONAL FACILITIES.

CHAMBER SERVICE AWARD

THIS AWARD IS PRESENTED TO A CHAMBER MEMBER WHO HAS PROACTIVELY DEMONSTRATED EXTRAORDINARY ENTHUSIASM FOR OUR ORGANIZATION THROUGH VOLUNTEERISM, AND PARTICIPATION IN CHAMBER ACTIVITIES AND/OR COMMITTEES. THIS NOMINEE SHALL ALSO HAVE ACTED AS A NOTABLE POSITIVE "AMBASSADOR" FOR OUR CHAMBER THROUGH INTERACTIONS WITH THE PUBLIC AND OTHER MEMBERS.

LIFETIME ACHIEVEMENT BUSINESS AWARD

THE PURPOSE OF THIS AWARD IS TO GIVE RECOGNITION TO A BUSINESS OR PERSON WHO HAS BEEN A DEDICATED AND POSITIVE FORCE IN THE WAHPETON BRECKENRIDGE BUSINESS COMMUNITY FOR SEVERAL DECADES.



**Wahpeton
Breckenridge**

CHAMBER OF COMMERCE

*For nominations go to:
www.wbchamber.net*

2022

ANNUAL BUSINESS *Awards*

SPONSORSHIP OPPORTUNITIES

CORPORATE SPONSOR - \$500

- LOGO RECOGNITION IN THE EVENT PROGRAM
- TABLE TENTS AT THE EVENT WITH LOGO
- LOGO IN PRINT AND SOCIAL MEDIA ADVERTISING
- RECOGNITION ON DIGITAL SIGN
- LOGO RECOGNITION ON DIGITAL SIGN
- RECOGNITION DURING RADIO INTERVIEW
- RECOGNITION AT THE EVENT

AWARD WINNER SPONSOR - \$200

- LOGO RECOGNITION IN THE EVENT PROGRAM
- TABLE TENTS AT THE EVENT WITH LOGO
- NAME IN PRINT AND SOCIAL MEDIA ADVERTISING
- RECOGNITION AT THE EVENT



**Wahpeton
Breckenridge**

CHAMBER OF COMMERCE

2022

ANNUAL BUSINESS
Awards

SPONSORSHIP APPLICATION

MY BUSINESS WOULD LIKE TO SPONSOR AT THE INDICATED LEVEL:

_____ Corporate Sponsor (\$500)

_____ Award Winner Sponsor (\$200)

BUSINESS INFO:

Business Name: _____

Primary Contact: _____

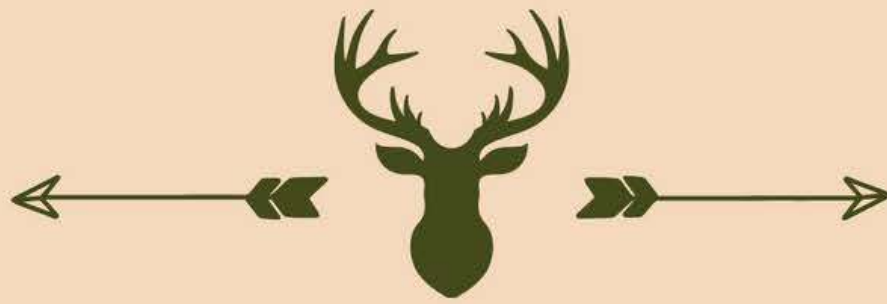
Email: _____

Phone Number: _____

*Sponsorship levels approved on a first-come first-served basis. Payment must be received to hold sponsorship level. Please be able to provide a hi resolution PDF of your company logo.

MAIL APPLICATION & CHECK TO:

WB Chamber of Commerce - 1505 11th St N - Wahpeton, ND 58075
Additional Questions Contact: lisa@wbchamber.net or call 701-642-8744



PLEASE JOIN US!

**SHOPPERS
ON THE
HUNT**

**FOR GIVEAWAYS, DEALS
AND PROMOTIONS**

**FRIDAY & SATURDAY
NOVEMBER 4 & 5**

Drifter Chic Boutique | Farm City Supply | Corner Drug

City Brew Hall | Breckenridge Drug | Fry'n Pan

Indigo Life + Style | Country Financial

Hairetage Hallmark | Golden Rule | Econo Wahp |

Econo Breck | 210 Wine & Spirits

Econo Wahp Wine & Spirits | Econo Breck Wine & Spirits

Red Door Art Gallery



#shopwahpbreck



SHOP DROP & WIN

Wahpeton Breckenridge

WIN UP TO \$1,000 IN CHAMBER BUCKS!

Shop or dine at any local small business on **Saturday, November 26th**, write your name and phone number on the back of your receipts, then drop your receipts off at the Chamber Office Dropbox by noon on November 28th. Two \$500 Chamber Bucks winners (1 from Wahp receipts & 1 from Breck receipts) will be drawn on November 28th.

KEEP THE

Cheer **HERE!**

#SHOPWAHPBRECK

NOVEMBER 28TH - DECEMBER 23RD

\$2500 Giveaway!

GIFT LOCAL CONTEST

The Wahpeton Breckenridge Chamber of Commerce & Twin Town Business Partners is giving away LOTS of Chamber Bucks this Holiday season! Daily drawings will be held at various businesses throughout the event to enter in for a chance of their part of \$2500. The more you shop local...the more chances you have to win!

-  Register at participating businesses with a minimum purchase of \$20 to win Chamber Bucks giveaways throughout the event. One registration per purchase only.
-  On the participating business "Keep the Cheer Here" day they will draw one lucky winner to win a \$100 Chamber Bucks giveaway.
-  The Chamber will be draw for the grand prize winner of \$300 Chamber Bucks on December 23rd. All winners will be contacted by phone.

**FOLLOW US ON FACEBOOK
FOR UPDATES**





**Wahpeton
Breckenridge**

CHAMBER OF COMMERCE



www.wbchamber.net

events - calendar

Calendar of Events

For a complete list of community events please see our events calendar on our website at www.wbchamber.net. Also "like" the Wahpeton Breckenridge Facebook page for the most complete list of updates and announcements.

CONTACT US

Wahpeton Breckenridge Area Chamber of Commerce
1505 11th Street N
Wahpeton, ND 58075

Phone - 701-642-8744
Fax - 701-642-8734

Lisa Kunkel - Executive Director
lisa@wbchamber.net
Allison Karlgaard - Executive Assistant
allison@wbchamber.net

WWW.WBCHAMBER.NET



Teen Friends of the Library

*3:30-5:00 PM on the 4th Tuesday of the Month
(beginning January 25th, 2022)*

Hey teens, you're in charge! Join the Teen Friends of the Library group at the Breckenridge Public Library. Gather with other teens aged 11-18 to plan activities, run your own library programming, and practice leadership skills. An adult advisor will be present, but the direction of the group will be up to you.



**BRECKENRIDGE
PUBLIC LIBRARY**
A BRANCH OF LAKE AGASSIZ REGIONAL LIBRARY
205 7th St N • 218-643-2113



*This program is
sponsored by the Friends
of the Breckenridge
Public Library*

JOIN US FOR STORYTIME

Thursdays at 10:30 AM



Find Us Here:

Breckenridge Public Library

205 7th St N.

218-643-2113 | breckenridge@larl.org



LAKE AGASSIZ
REGIONAL LIBRARY

BUSINESS

For

SALE

indigo

life + style

BE YOUR
OWN BOSS

INDIGO IS AN ESTABLISHED
WOMEN'S APPAREL AND GIFT
BOUTIQUE IN WAHPETON, ND

For financial information
Contact Mickie Mohs

701.591.0169



Your dreams are waiting for your courage to catch up

Reasons to join The Business Connection

1. The outside referrals I get from members. I've heard "(TBC member) recommended you" more times than I can count!
2. When I add new products and services, I get to tell 20+ women at one time.
3. The Night of Indulgence event held in November - a great way to market your business to the community.
4. Network with other smart & talented business women.
5. The opportunity to support local business.
6. Grow your business.
7. Name recognition in the community.
8. Fun members!

For more info:

Find us on Facebook [TheBusinessConnection W/B](#)
or contact Sheri Friederichs - President
(701) 403-7164





ENTER FOR A CHANCE TO

WIN A FREE

— 1 YEAR —

MEMBERSHIP

RECEIVE A FREE \$50 GIFT CARD TO OUR CLUB JUST FOR ENTERING



Let's make HEALTHY HAPPEN



Friendly staff



Try us free



Always open



Join one. Join all.

Hey Wahpeton! Anytime Fitness in Wahpeton is NOW under new ownership and they OFFER so much to achieve your goals. We have partnered with Anytime Fitness Wahpeton and by scanning this QR code, you can enter in to win a FREE YEAR with them. Everyone who enters ALSO gets a \$100 gift card to the gym just for entering. Make sure you share, tag, and comment all your family and friends to get entered in. Also make sure you scan the QR code and get your name entered!





VERTIN-MUNSON
FUNERAL & CREMATION SERVICE

BRENDA KLOSTERMAN
Pre-Arrangement Specialist

Cell: (701) 640-0840
Email: Brenda@VertinMunson.com



BRENDA KLOSTERMAN ADVANCED FUNERAL PLANNER

Brenda specializes in pre-arranged funeral and cremation planning and provides individuals and families with opportunities to explore their final wishes. She also provides valuable information regarding options to set funds aside for burial and cremation expenses.

Brenda offers the following expert advice:

The first step in planning ahead is organizing your vital information and putting your wishes in writing. Having all of these details in one place – and on file with your funeral professional – is of tremendous assistance to your family. It is a gift of love only you can give.

Your file should include:

- Copies of all important documents such as your life insurance policies, birth certificate, marriage license, and military records. Remember, do NOT keep these copies in your safe deposit box because oftentimes the contents are not available to your loved ones until long after they're needed.
- Important biographical details that will help tell your life story. This information will save your family time and added stress.
- Your preferences for services. Whether traditional or non-traditional, there are many details to consider such as flowers, music, favorite readings or scripture, and casket or urn selection. Besides removing this responsibility from your family, it also gives you the opportunity to design the unique service you want, which can be especially meaningful and healing for loved ones.

The second step is determining your pre-funding options. We plan and set aside funds for many things in life, including vacations and retirement. Why not do the same for the inevitable? Death has no schedule, and it can create the burden of unexpected expenses for family members. Setting aside funds for your funeral arrangements ensures that your final wishes can be carried out while allowing loved ones to focus on their journey through grief.

Brenda can provide you with the information you need to make informed and thoughtful decisions. She is available to meet with business groups, individuals and families by appointment and can be reached by calling her at 701-640-0840.



JOSEPH VERTIN & SONS
FUNERAL HOME
BURIAL - CREMATION - MONUMENTS

303 5th St. N • Breckridge, MN 56520
www.JosephVertinAndSons.com

BRENDA KLOSTERMAN
Pre-Arrangement Specialist

Cell: (701) 640-0840 • Office: (218) 643-5593
Fax: (218) 641-5831
E-mail: brenca@josephvertinandsons.com



DID YOU KNOW THAT THE LEACH HOME OFFERS ADULT DAY CARE?

Adult Day Care

Are you a full-time caregiver who could use a little break? Worried about leaving your loved one home alone during the day? We can help! The Leach Home now offers Adult Day Care. Provided are, a fully furnished, private room, including a refrigerator, television, and private bathroom, along with fully staffed medical professionals. We have daily rates, so you can pick and choose the days. No lease or contracts to sign! Stop by anytime. The doors are always open. We would love to visit with you and help create a plan for your needs. Please check out our website at the link provided below.

<https://www.theleachhome.org>

**Fully staffed
medical
professionals**

**Full day of activities
including exercise**

**Three meals
and three snacks
daily**

**Two resident cats for
lap hugs if desired**

**Down time for cat
naps if needed**

LEACH HOME

714 4TH ST N

Wahpeton ND

701-642-4233

lndcay@theleachhome.org

Bois de Sioux Adventure Area

Location: Pope Street, south of Favorites Deli & V-Mart off Minnesota Ave (grass clipping/leaf drop off site).

**USE CAUTION ON TRAILS: Slippery & Uneven Ground

**Do NOT use trails when wet



DONATIONS NEEDED for lighting, signage, parking, maintenance of trails and additional amenities!

Facebook: Bois de Sioux Adventure Area

www.breckenridgemn.net/bois-de-sioux-adventure-area



NORTH DAKOTA STATE COLLEGE OF SCIENCE

Performing Arts

2022-2023 SCHEDULE

Fall Music Concert

October 25 • 7:30 p.m.

**Holiday Music
Concert**

December 6 • 7:30 p.m.

**Spring Drama
Production**

March 27-31

Spring Music Concert

April 18 • 7:30 p.m.

**Wildcat Singers &
Jazz Band Concert**

May 2 • 7:30 p.m.

NDSCS



@NDSCSarts



@NDSCS.PerformingArts

FREE WILL BOOK SALE

Generously donated pre-owned books for sale featuring discussions of art, artists, and step-by-step instruction manuals.

All proceeds go directly to Gallery Operations.



418 Dakota Ave

Wahpeton, ND 58075

701-591-1010

rdag@midconetwork.com



The Red Door Art Gallery
is pleased to present

Nature & Wildlife Exhibition



FEATHER STUDY 2
BY LINDSAY LEEDAHL

Exhibition:
Oct 4 - Nov 12

Artists Reception:
**Thurs. Nov 3,
5pm - 7 pm**



418 Dakota Avenue, Wahpeton, ND
(701) 591-1010

The Red Door Art Gallery
is pleased to welcome
Featured Fiber Artist

Bonnie L. Anderson



SUMMER FIELDS

FIBER ART BY BONNIE L. ANDERSON

Exhibition:

Oct 4 - Nov 12

Fiber Art Showcase
& Reception:

**Sat. Nov 5,
10am - 3 pm**



418 Dakota Avenue, Wahpeton, ND

(701) 591-1010



15TH ANNUAL
HOLIDAY
"SHOP AT HOME"

**SHOP YOUR FAVORITE AT-HOME BUSINESSES
AND BID ON YOUR FAVORITE SILENT
AUCTION ITEMS**

ALL EVENT PROCEEDS & 100% OF SILENT AUCTION
FUNDS GO DIRECTLY TO KINSHIP OF
RICHLAND-WILKIN COUNTIES



SATURDAY, NOVEMBER 5, 2022

WAHPETON COMMUNITY CENTER
10:00 AM - 3:00 PM

ADMISSION IS FREE
LUNCH WILL BE AVAILABLE
FOR PURCHASE

WOULD YOU LIKE TO PARTICIPATE?

We are looking for businesses/vendors, silent auction donations and
volunteers! For more info please email: amylbotz@gmail.com

BLOOD DRIVE



Because of you,
life doesn't stop
[#vitaltolife](#)

SCOTT'S ELECTRIC BLOOD DRIVE

TUESDAY, NOVEMBER 8

9:00AM TO 12:00PM

LOCATION: SCOTT'S ELECTRIC, VITALANT BUS

TO MAKE AN APPOINTMENT PLEASE CONTACT KAYCEE FUDER @
(701) 642-9244.

OR ONLINE @ [VITALANT.ORG](#) - DONATE NOW - SEARCH BY ZIP
CODE.

SPONSORED BY: SCOTT'S ELECTRIC

 **GIVE BLOOD | [vitalant.org](#)**

vitalant. 



THREE RIVERS CRISIS CENTER

CHRISTMAS MARKET

SHOP GENTLY USED CHRISTMAS DECORATIONS

WEDNESDAY NOVEMBER 9, 2022
2:00-8.00 P.M.
HUGHES SHELTER
CHAHINKAPA PARK, WAHPETON

PROCEEDS BENEFIT
THREE RIVERS CRISIS CENTER
REFRESHMENTS WILL BE SERVED
WHILE YOU SHOP



Join us for the fall *Power of 100*
Harvest Fest!

Wednesday, November 9th, 2022

6:00-9:00 p.m.

City Brew Hall
120 4th St N, Wahpeton, ND

Tickets are \$50 per person which includes
food and beer pairings from Icewind
Brewing of Mapleton, ND



The Brew chefs will be serving a wonderful harvest meal with: Pickled baby beets with candied kumquat and a goat cheese spread, sweet potato fried Walleye Crisp Inna Sardin can with pickled salad, smoked chilote corn chilled soup, smoked short rib with scalloped potato fried cub and a cherry BBQ demi and grilled peach cobbler for dessert.



To purchase your ticket, visit: ndcf.net/richlandwilkin or use the QR code above.



5th Annual Festival of Trees

Once again, we are very excited to welcome those interested in participating in the 5th Annual Festival of Trees for the Wahpeton/Breckenridge and surrounding areas!

This event is always a favorite and memorable time of the year for us in the Wahpeton/Breckenridge towns and we are thankful for your assistance in making it a joyous event!

What is the festival of trees and how might you partake? It is simple!

The festival of trees highlights artificial, new Christmas trees sponsored and decorated by community businesses, organizations and families. The trees will be given to families that apply and who would not have a tree for the Holiday season.

We ask that you fill out the application and return it to Tami Sirek at 1655 Prairiewood Ct, Wahpeton, ND 58075 or email tamisirek@gmail.com. Deadline will be Friday, November 11th to participate and we are capping the donated trees at 40.

We ask for these things:

- New artificial donated trees with lights. Please bring the original box to send along, so that we can send it with the family to store after the holiday.
- Decorations and lights. *NOTE optional - some have also wrapped a gift to share with the family OR Money donations towards the event.

The donated trees will be setup in the Heritage Square in Wahpeton. The tree sizes cannot be any larger than 6 feet in size as families that receive them generally have limited space in their homes.

The gifting process is handled through our Wilkin/Richland Kinship and Richland Social Services. A family cannot receive another tree this year, if they have received one in the past. There is always a chance that we will have more applications than trees, we will do our best to fulfill the needs before us. Average trees that have been donated in the past four years were 30-43, and this year we are capping donations at 40.

Trees can be setup on Thursday, November 17th and Friday, November 18th between 11:00 am and 6:00 pm. The trees are on display through Monday, December 19th, where families that are gifted the trees, will be able to come and get them to enjoy in their homes for the Christmas holiday. Times for pickup will be between 11:00 am and 6:00 pm on Monday, December 19th. Your business name or the name that donated the tree will be displayed on each tree that is received.

Your participation will bring a smile to many faces, including mine, as it brings me such joy to go and enjoy the space every year. Please feel free to contact me with any questions you may have at (701) 640-0395.

Thanks for your support!



Only accepting
(40) donated
trees this year

5th Annual Festival of Trees Application Form Deadline to participate is Friday, November 11th, 2022

**PLEASE RETURN TO: TAMI SIREK AT TAMISIREK@GMAIL.COM OR MAIL TO
TAMI SIREK - 1655 PRAIRIEWOOD CT, WAHPETON, ND 58075**

PLEASE PRINT:

Name of business or donated by: _____

Contact Name: _____ Phone: _____

Address: _____

Email Required: _____

Authorization Signature: _____

Check all that apply:

I will donate a new artificial tree with lights and decorations. (Please include the box for family)

I will contact Tami with a cash donation for items for the event.

We would like you to set up and decorate the tree for us.


We will set up a tree during the scheduled times of Thursday, November 17th 11:00 am to 6:00 pm or Friday, November 18th between 11:00 am to 6:00 pm.

Please PRINT the name for the sign. Donated by _____

*Note there is little room on the sign, so we will do our best to make it fit.

You are always welcome to make your own sign for under the tree if you feel the need to have more.
We reserve rights to alter decorations for safety reasons.

Thank you for making this event great for all that get to enjoy it!



Hairetage Hallmark

Holiday Open House

November 11-13, 2022

HOURS:

November 11th - 10:00-5:30

November 12th - 10:00-4:00

November 13th - 12:00 - 3:00

Enjoy our event in store with treats,
promotions and share in the
excitement!

Wahpeton, ND | 701.642.6991



Women & Words



Saturday, November 12, 2022

10:00 am - 3:00 pm

Join us for a day of book readings and talks from a selection of women authors. Get to know their process, ask questions, and have your book signed. A detailed schedule of authors will be coming soon. Stay tuned!



Join us for West Central Initiative's

AUTUMN CONVIVIUM

11·15·22

Historic Holmes Theatre in Detroit Lakes

Join us for an evening of celebration, exploration, and conversation.

Hors d'oeuvres and dessert provided by Blackboard.

5-6:45 p.m. Social & Interactive Booths

Sample a variety of hors d'oeuvres while exploring interactive booths focused on climate, community, and kids. Booths include: two exhibits showcasing the importance of water in our region, local honey tasting, and a meet & greet with the creators of our children's book, *Let's Go! Ten Adventures Through West Central Minnesota*.

6:45-7:30 p.m. Dessert & Conversation

Enjoy dessert while Storyteller Kevin Kling hosts an evening presentation featuring a story by Emily Buermann, a Becker County resident and enrolled member of the White Earth Band of Ojibwe, and a conversation between Kevin Lindsey, CEO of the Minnesota Humanities Center, and Anna Wasescha, President of West Central Initiative.



Kevin Kling



Kevin Lindsey



Emily Buermann



Register: wcif.org/convivium | Cost to Attend: Free

The Business Connection
"Connecting Women Through Business"
Presents the 15th Annual

*Night
of
Indulgence*
A Country Christmas



TUESDAY, NOVEMBER 15TH 2022

4:30 - 7:30PM

**THE WAHPETON EVENT CENTER
995 21ST AVENUE NORTH WAHPETON, ND**

ADMISSION: \$10

**DOOR PRIZES & CHANCES TO WIN GRAND PRIZES
COMPLIMENTARY APPETIZERS ♦ CASH BAR
BRING YOUR FRIENDS!**

THE WIZARD OF OZ

THURSDAY, NOVEMBER 17TH AT 7:00PM

FRIDAY, NOVEMBER 18TH AT 7:00PM

SATURDAY, NOVEMBER 19TH AT 7:00PM

Travel to the magical land of Oz in the WPS production of "The Wizard of Oz"!

Adult & K-12 Student tickets: \$10

Preschool and under: Free

Tickets will be sold at the door.

Wahpeton High School Auditorium

CAST Workshop

(Community Awareness Skills Training)

soulshop YOUTH LEADERSHIP



Wednesday, November 16th, 2022

6:30 – 8:15 p.m.

Breckenridge United Methodist Church
910 Main Street
Breckenridge, MN

CAST is a 1 ½ - 2-hour community-oriented program exploring how we think and talk about suicide. It addresses suicide as a major community health problem and steps that can be taken to reduce the risk of suicide.

Possible participants include firemen, police, counseling center employees, hospitals, schools, support groups, NAMI, domestic abuse organizations, and other leaders in your community. However, all are welcome to this meaningful interactive discussion of the problem of suicide with opportunities to practice interactions with persons at risk.

Everyone is welcome! Let's learn and develop strategies that can save even one life.

Register Today by calling [218-643-5158](tel:218-643-5158) or emailing Breckenridge UMC.

*No charge to attend.

For more information please contact:

Breckenridge United Methodist Church: 218-643-5158 or breckumc@gmail.com

CAST is brought to you in part by:
Breckenridge UMC.

SOUL SHOP™ FOR YOUTH LEADERS

Thursday

November 17th

Wahpeton Event Center

8:30am – 3:30pm

Soul Shop™ for Youth Workers is a one-day workshop to equip youth pastors, youth leaders, camp directors, camp counselors and anyone else who works with young people to minister to those impacted by suicide. Special attention will focus on youth-specific issues of impulsivity, contagion, social media, mandated reporting and confidentiality. The training includes the creation of worship resource, training in suicide awareness and basic conversation skills, and how to extend the invitation to those who have been suicidal in the past to share their stories. This workshop engages the question of how to cultivate a soul-safe culture within your youth ministry.

Details

Who Should Attend?

Faith Leaders & All Those Passionate
for Serving Youth

Location:

Wahpeton Event Center
995 21st Ave N
Wahpeton, ND

Cost:

\$35.00 - Includes Breakfast & Lunch

Registration:

<https://SoulShopForYouthLeaders.eventbrite.com>

Questions?

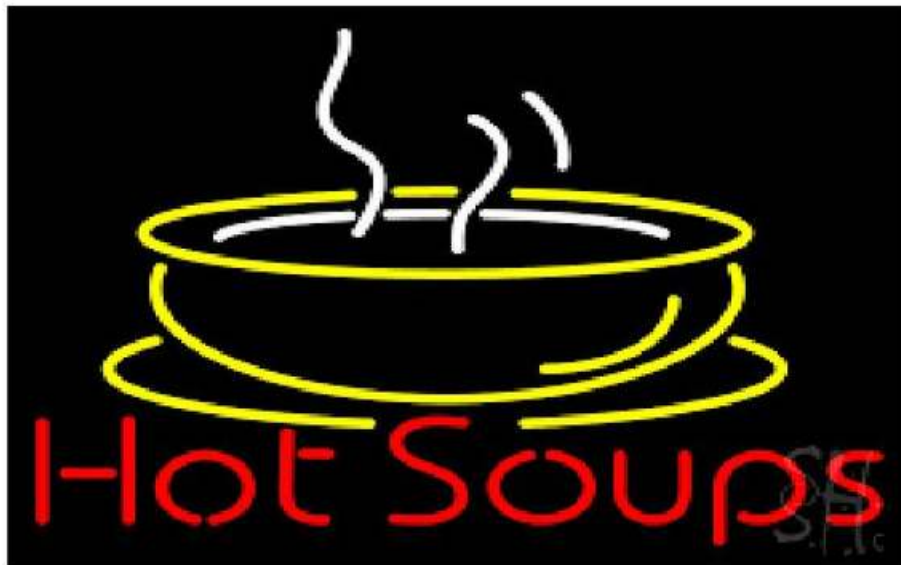
United Methodist Church of Breckenridge
mieranseth@email.com

Brought to you by:

United Methodist Church of Breckenridge

In partner with:

Joseph Vertin & Sons and Vertin-Munson Funeral Homes,
Prairie St. John's, Wilkin County Children's Collaborative.



SOUP DAY FUNDRAISER FOR STUDENT ACTIVITIES

Friday, November 18, 2022

Includes soup, bread, water, and dessert

**Please join Circle of Nations School for
Soups available from 11:00am-1:00pm
Call ahead to request a to-go order @ (701) 672-7225**

**Free Will Donation – all proceeds benefit activities
for students @ Circle of Nations School**

**Located at Administration building on Circle of
Nations School campus. 832 8th St N Wahpeton**



Join Us For a Wahpeton Holiday Tradition!

Music by
TIM
COLLINS

22
NOV

5:30 pm
(Tree lighting
@ 6:00 pm)

TREE LIGHTING
at **HERITAGE SQUARE**



Join us for live
music, hot
chocolate, and a
chance to win a
Walmart gift card

NEW ROUTE!
MUSIC!
TURKEY GUIDES!!

**VALLEY LAKE BOYS HOME
FOURTH ANNUAL
TURKEY TROT 5k & 1MILE
NOVEMBER 24TH, 2022
RACE BEGINS AT 8:45AM**

RUN!
WALK!
OR
VIRTUAL!

Run Information: Run begins and ends at Breckenridge Family Community Center!
5k distance OR 1 Mile for runners and walkers of all abilities. Pre-Registration \$10 & \$20.
After November 23, \$15 & \$25 (T-shirt not guaranteed) **Walk-up's welcome!**

Registration Information: Pre-Registration forms and payment may be Dropped off at:
Breckenridge City Hall, Breckenridge Drug, Breckenridge Middle or High School
Many Ways to Register!

Venmo: @Vlboyshome (include T-size, waiver must be signed prior to race)

**Mail: VLBH
PO Box 411
Breckenridge, MN**

Fax: 218-643-5226

**Email: Jetzler@valleylakeboyshome.org
Text: 701-403-9601**

Make Checks to: Valley Lake Boys Home

NAME: _____ AGE: _____ SEX: _____ PHONE: _____
ADDRESS: _____ CITY: _____ STATE: _____ ZIP _____
EMAIL: _____ **5k** _____ **1 Mile** _____

T-Shirt Size: YS _____ YM _____ YL _____ S _____ M _____ L _____ XL _____ XXL _____
No, Thank You, I don't care for a tee-shirt _____

WAIVER: I know that running/walking on a road/path is a potentially hazardous activity. I should not enter unless I am medically able. I assume all risks associated with running/walking this event. Having read this waiver and knowing these facts and in consideration of your accepting my entry fee, I, for myself, and anyone entitled to act on my behalf, waive and release the Valley Lake Boys Home, City of Breckenridge, the Parks and Recreation Board, and all sponsors, their representatives, and successors, for all claims or liabilities of any kind arising out of my participation in this event.

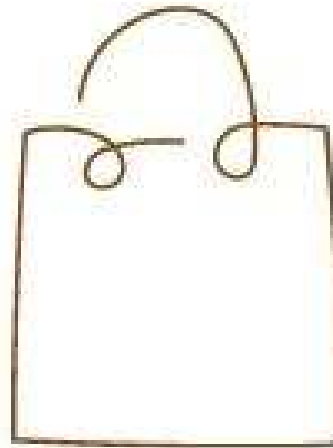
Signature

Date

Signature (Parent's Signature If under 18)

Date

VALLEY LAKE BOYS HOME IS A 501(c) 3
Learn more about us @ valleylakeboyshome.org
Or check out our Facebook Page



SIP + SHOP

@ CITY BREW HALL

Nov. 26th 10am-2pm

vendor event

shop + support local small
businesses

ANDY ZIEGELMAN

MEDICAL BENEFIT

HOSTED BY FAMILY AND FRIENDS

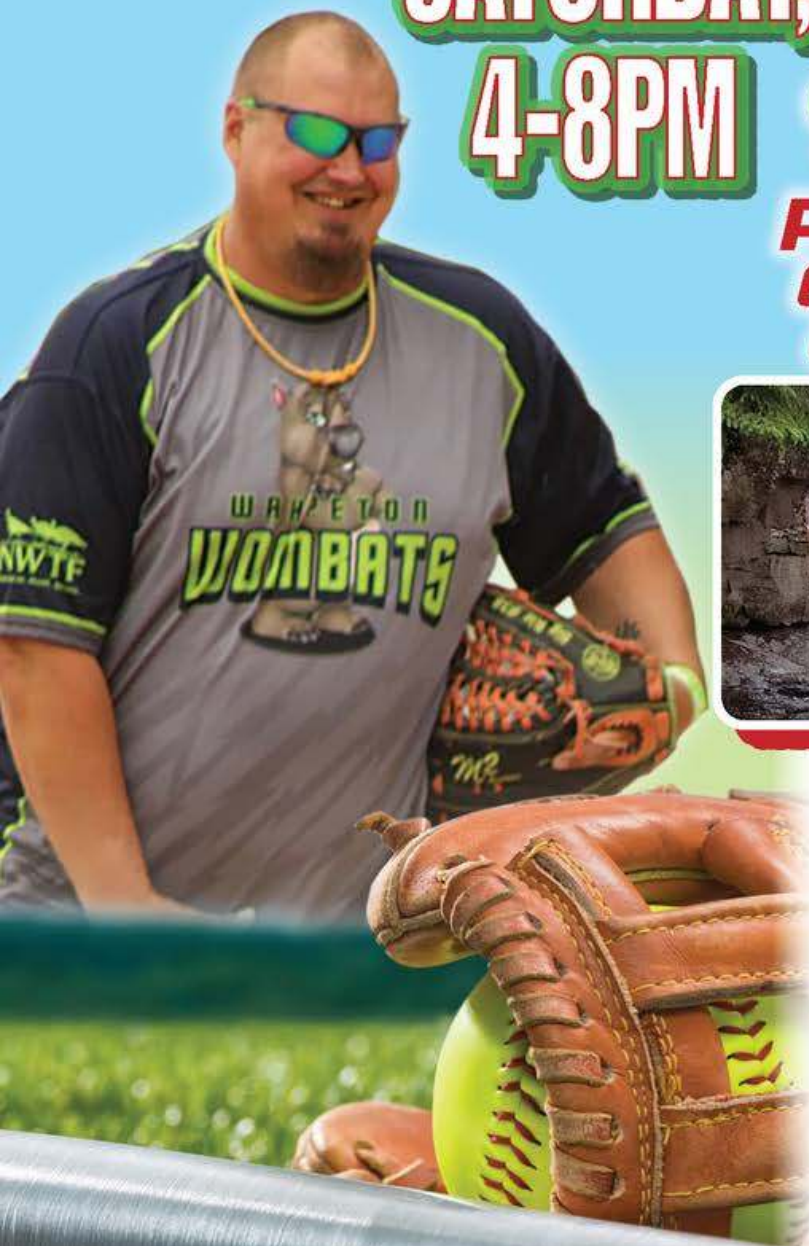
SATURDAY, NOVEMBER 26TH

4-8PM

GREAT BEND FIRE HALL

*** 201 MAIN ST, GREAT BEND, ND 58075 ***

**PULLED PORK MEAL
(FREE WILL OFFERING)
& SILENT AUCTION**



Andy was diagnosed with cancer late last year. He has not been feeling well the past couple months, ER Trips, hospital stays. Andy had surgery on 9/21 to remove scar tissue from a previous surgery. Cancer nodules were found around the stomach during this surgery and Andy is now being referred to Mayo Clinic. Andy has not been able to work.

His family and friends are coming together to help Andy and Carmen financially during this difficult time.

Follow "Andy Ziegelman Benefit" on Facebook for updates

Monetary Donations can be made to:
Andy Ziegelman C/O Diana Hermes
Po Box 473 • Hankinson, ND 58041

Donated items such as gift baskets, gift certificates, gift cards, etc., from individuals or area businesses are welcomed and appreciated.

If you have a donation to be picked up contact:

Diana Hermes 701-640-9925 Amy Cookman 701-899-2784 Jennifer Muller 701-640-5342 Jody Frankl 701-403-5947

www.gofundme.com/f/andy-ziegelman

Tree Lighting

Monday, November 28th

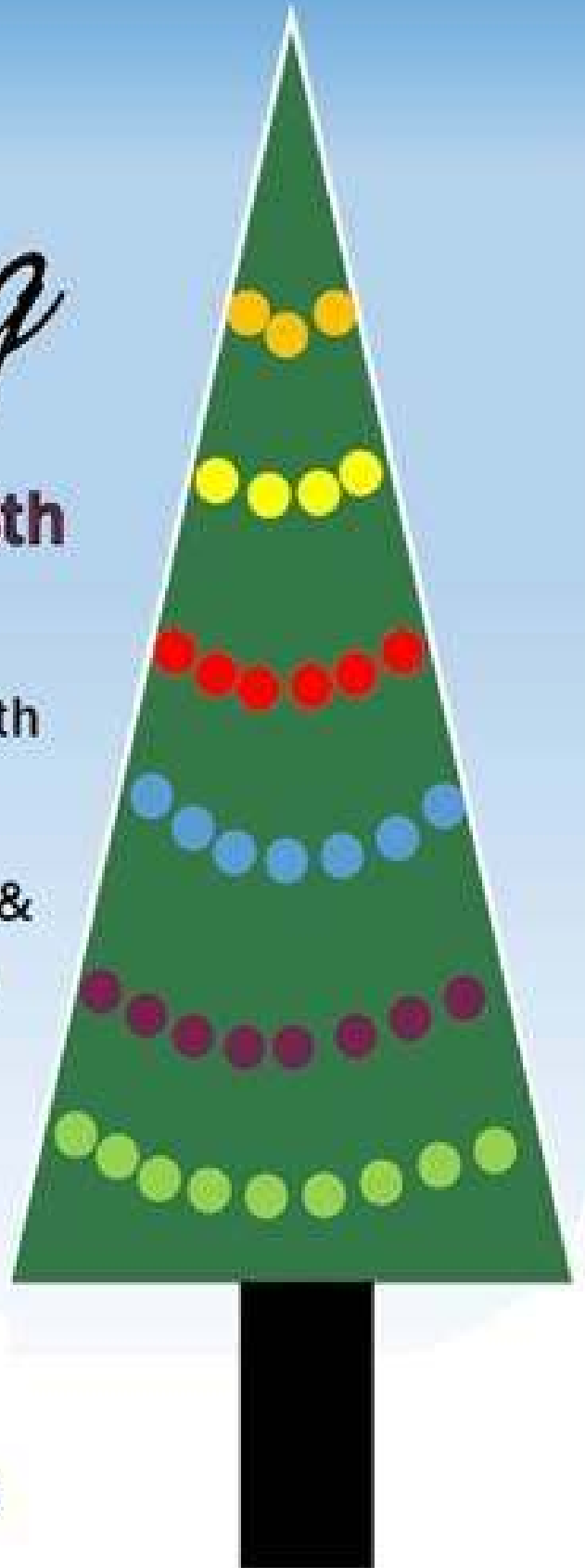
Tree Lighting at 6pm

Beede Ave & Highway 75 North

Food, games, bonfire, crafts, &
much more from 5 – 7 p.m.

Family Community Center

521 6th Street North





Celebrate **VELMA'S 50TH**
TAX SEASON 1973 - 2023

Join us for Soup and Goodies
FRIDAY, JANUARY 6, 2023 11-2PM
Free will donations benefiting
Richland Wilkin Food Pantry
Building Renovation Fund

211 Dakota Avenue | Wahpeton, ND 58075
(Across from St. John's Church)
Ph. 701-642-2128

**H&R
BLOCK**

**Expert tax prep
in person or virtually.**

**Flexible hours.
Extra income.
Meaningful work.**

Learn more about our seasonal positions.

NOW HIRING:

- Experienced Tax Pros
- First-Year Tax Pros
(paid training)
- Receptionists

APPLY AT:

H&R Block
211 Dakota Ave.
Wahpeton, ND 58075
701-642-2128

**H&R
BLOCK**




Luck of the Irish



BINGO



Bar Pull  Silent Auction

Saturday, January 14, 2023

Wahpeton Community Center

\$50 per ticket

Includes one drink, dinner
& 12 bingo games!

**Proceeds support the Wahpeton FFA Chapter's
trip to Ireland in Summer 2023!**

Social Hour  **4pm**

Dinner  **5pm**

Bingo  **6pm**

Must be 21 Years Old to Attend.
Please bring a valid ID. Bar Service Available.
Authorized by City of Wahpeton
Permit #GC-1726.

Apple AirPods Pro and Apple Watch series 7
1/16 John Deere Tractor + \$150 Gift Card
Bruders Butcher \$250 Gift Card
Ninja Foodi 10 Qt - 6 in 1
Ring Doorbell with Echo
50" Amazon Fire TV
Milwaukee Drill Set
iRobot Roomba 692
Michael Kors Purse
Traeger Tailgator
Coach Purse
Fire Ring

BINGO
Prizes

**For tickets, email heather.woods@k12.nd.us
or call 701-672-5067.**

*Building better
communities
by fighting against food
insecurity*

ONE CLIENT'S STORY

No two Food Pantry clients are alike, but the need is real. We'd like to share the story of one of our clients, John.

Late one Monday afternoon we received a call from John, a single dad of four children and the sole supporter of his family. It was almost the end of our operating hours and he asked how long we would be open.

He went onto explain that he wanted to cook supper for his family that night, but had used all his groceries the previous day. Fortunately he would be paid the next day, but needed to feed his family that night.

John arrived at the pantry before closing time and a volunteer guided him around the pantry helping him with the food selection. John expressed his thankfulness many times to the volunteers that evening. He was so happy to be able to go home that evening and feed his family.

John seldomly uses the Food Pantry services and has done so only when his needs are the greatest.

Many of our clients comment "I didn't think I would ever be here".



**RICHLAND WILKIN
EMERGENCY FOOD PANTRY**
699 8th Ave. S
Wahpeton, ND 58075

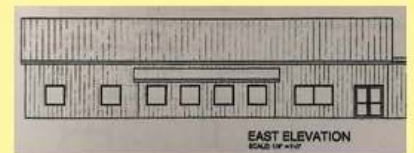
701-642-1921

rwfoodpantry@outlook.com

[Facebook.com/rwfoodpantry](https://www.facebook.com/rwfoodpantry)



***"EXPANDING THE
FIGHT AGAINST
FOOD INSECURITY"***



WHAT IS THE RWEFP?

- ◆ The **Richland Wilkin Emergency Food Pantry** provides an emergency food supply to those in need in the 20 towns and rural areas of Richland County, ND Wilkin County, MN.
- ◆ The **RWEFP** has served the community for almost 40 years.
- ◆ The **RWEFP** is located on the south side of Wahpeton.
- ◆ The **Food Pantry** is open to serve clients 4 days a week.

WHO DO WE SERVE?

- ◆ Family Units
- ◆ College students
- ◆ Senior citizens
- ◆ K-12 students
- ◆ People with health issues
- ◆ Working families experiencing unexpected circumstances
- ◆ Anyone in need



Expanding the fight against food insecurity

RWEFP QUICK FACTS

- ◆ We served close to 500 clients a month in 2021.
- ◆ Over 300 students receive weekend food through the Backpack Program.
- ◆ Over 80 tons of food was distributed in 2021 (which equals the weight of an African elephant every month!).
- ◆ Our mobile unit serves Fairmount, Lidgerwood and Rothsay once per month.
- ◆ We operate with only one part-time paid employee and over 30 volunteers.
- ◆ Funding comes from grants, business donations and donations from individuals.



Current warehouse

FOOD PANTRY ADDITION & REPAIR PROJECT

Planning for a building update began in 2018 and includes these plans:

- ◆ **Construction** of an addition to the current pantry to include space for food distribution, operations of the school backpack program and warehouse space for our food supply.
- ◆ **Demolition** of the current storage building/shed that has failed.
- ◆ **Repair** of the roof on the existing pantry so it can be converted to warehouse space.

HOW ARE WE FUNDING THE EXPANSION PROJECT?

- ◆ We have secured some grant funding and donations.
- ◆ We are actively seeking other available grants and funding sources.
- ◆ We have been setting funds aside.
- ◆ We are asking community businesses and individuals for donations.

WE ONLY NEED TO RAISE \$150,000 IN ADDITIONAL FUNDS TO MEET OUR GOAL!

WITH YOUR HELP THE RWEFP CAN:

- ◆ Address safety concerns for all clients & volunteers in our facilities.
- ◆ Comply with ADA standards.
- ◆ Create adequate & safe storage.
- ◆ Add a demonstration kitchen/classroom to provide clients with additional cooking and nutrition information.
- ◆ House our programs in one location.

DONOR LEVELS

\$1000 Plus Dessert
\$500 - 999 Dinner
\$100 - 499 Lunch
\$ 20 - 99 Breakfast
Under \$20 Snack



DONOR LEVELS

\$1000 Plus Dessert
\$500 - 999 Dinner
\$100 - 499 Lunch
\$ 20 - 99 Breakfast
Under \$20 Snack



DONOR LEVELS

\$1000 Plus Dessert
\$500 - 999 Dinner
\$100 - 499 Lunch
\$ 20 - 99 Breakfast
Under \$20 Snack



**BUILDING FUND
DONATION FORM**

Name(s): _____

Address: _____

City: _____

State: _____ Zip: _____

Phone: _____

Email: _____

Date: _____

Total Donation \$ _____

I wish my donation to be anonymous
____ Yes ____ No

____ Cash ____ Check Ck. # _____

**BUILDING FUND
DONATION FORM**

Name(s): _____

Address: _____

City: _____

State: _____ Zip: _____

Phone: _____

Email: _____

Date: _____

Total Donation \$ _____

I wish my donation to be anonymous
____ Yes ____ No

____ Cash ____ Check Ck. # _____

**BUILDING FUND
DONATION FORM**

Name(s): _____

Address: _____

City: _____

State: _____ Zip: _____

Phone: _____

Email: _____

Date: _____

Total Donation \$ _____

I wish my donation to be anonymous
____ Yes ____ No

____ Cash ____ Check Ck. # _____

**Richland Wilkin Emergency
Food Pantry
Building Fund
699 8th Ave. S
Wahpeton, ND 58075**

**Richland Wilkin Emergency
Food Pantry
Building Fund
699 8th Ave. S
Wahpeton, ND 58075**

**Richland Wilkin Emergency
Food Pantry
Building Fund
699 8th Ave. S
Wahpeton, ND 58075**