



Wahpeton Breckenridge

CHAMBER OF COMMERCE

Chamber Board of Directors

Jodi Hendrickson - President

Edward Jones

Edd Goerger - Vice President

Heartland Insurance

Jim Cornelius - Secretary

Benedictine Living Community

Chris Kappes - Director

Circle of Nations

Angela Cruff - Director

Blue Cross Blue Shield

Becky Dockter - Director

OSPTI

Kory Kaste - Director

SVEDA

Tana Erbes - Director

NDSOS

Mary Wolfgram - Director

Twin Town Villa

Gail Grant - Director

CHI St. Francis Health

Staff

Lisa Kunkel - Executive Director

Allison Karlgaard - Executive Assistant

KEEP THE

Cheer HERE!

#SHOPWAHPBRECK

It's that time of year when we begin our Keep the Cheer Here campaign. Supporting our area retail stores and restaurants keeps your dollars in our community and stimulates the local economy.

Keep The Cheer Here started on November 28th, stop by any participating business, spend a minimum of \$20 and register at the business for a chance to win \$2,000 in Chamber Bucks. In the month of December we will feature a different business each day and they will draw from their entries to give away \$100 in Chamber Bucks. On December 23rd, we will do a grand prize drawing for \$300 in Chamber Bucks from all the entries collected by the participating businesses.

To find out more about this promotion and to keep up to date on everything happening in the Twin Towns go to our website at www.wbchamber.net or follow us on Facebook. Thank you for supporting the Chamber and our communities.

The Chamber is also looking for nominations for our Annual Meeting Business Awards. Anyone can nominate! Categories include Spark Plug Award, Mark Werre Award, Business of the Year, Chamber Service Award, Nonprofit of the Year and Lifetime Achievement Business. We will be accepting nominations through Monday, December 19. The Chamber Board of Directors will vote for the winners who will be recognized at our Annual Meeting. Access the online nomination form here at www.wbchamber.net



Join our Team

We are currently looking to add more ambassadors to our group. The Twin Town Ambassadors meet the 2nd Tuesday of each month at 8:30 am at the chamber office. Being an ambassador is a great way to learn more about what is happening in the businesses in our community.

If you would like to join this fun, energetic group and help us celebrate the milestones of our business community, please feel free to contact us and we'd be happy to give you more information.

Twin Town Ambassadors

Amanda Crouse - President

Bremer Bank

Diana Hermes - Vice President

Daily News

Wendy Kahler - Secretary

Red River Human Services

John Nyquist

Edward Jones

Carla Broadland

City of Wahpeton

Brittany Myhra

Chahinkapa Zoo

Mary Wolfgram

Twin Town Villa

Kory Kaste

SVEDA

Raychel Wallender

Schmitt's Plumbing, Heating & Sheetmetal, Inc.

Brittany Finnie

Nielsen Electric TV & Appliance Center

Mitch Ronan

Bell Bank

Angie Cleveland

CAPLP

Jenna Lovgren

Red River Communications

Stevin Lipp

Country Financial

Lindsay Auwarter

Leach Home

Mandy Steinberger

Breckenridge Family Comm. Center

Tony VanDyke

Thrivent Financial

Farah Grey

Econo Foods

Judy Comings

Healing Arts Chiropractic

Ashley Mohs

First Community Credit Union

Julie Rosenberg

Essentia Health

Chelshey Grandstrand

Richland Title

Rhonda Thiel

QSciences

Amber Bogenreif

Red River Valley & Western Railroad

Welcome To Our New Chamber Members



BOUTIQUE RETAIL & CUSTOM PHOTOGRAPHY

Studio 22 Designs is located in Wahpeton, ND and features boutique retail and custom photography. Lisa specializes in high school seniors, newborns, and families.



Holiday
STORE HOURS

Fri Dec 2	10:00 - 6:00
Fri Dec 9	10:00 - 6:00
Sat Dec 10	10:00 - 5:00
Fri Dec 16	10:00 - 6:00
Sat Dec 17	10:00 - 5:00
Fri Dec 23	10:00 - 8:00



Studio 22 Designs
904 16th Ave. N.
Wahpeton, ND
701-430-1024

Infostudio22nd@gmail.com

<https://www.facebook.com/studio22designsnd>

WAHPETON BRECKENRIDGE

CHAMBER BUCKS



shop local. eat local. spend local. enjoy local

The Chamber Bucks Program is getting an exciting new update for 2022. Chamber Bucks will now be distributed as an actual check that businesses will be able to deposit and will eliminate the need to request reimbursement from the Chamber office. Watch your email for more details coming soon.

The Wahpeton Breckenridge Chamber of Commerce is happy to offer the Chamber Bucks Program to the Twin Town Communities. The Chamber Bucks Program is designed to keep dollars local. They are great as employee incentives/rewards, giveaways or gifts from friends and family. Anyone can buy Chamber Bucks. They can be purchased at the Wahpeton Breckenridge Chamber of Commerce office in \$5, \$10 and \$20 denominations and used for goods and services at participating businesses in the Twin Towns.

WHERE CAN I USE CHAMBER BUCKS?

Chamber Bucks can be used for products and services at participating chamber member businesses in Wahpeton and Breckenridge. Please scan the QR Code below to view all participating members.

HOW DO I USE CHAMBER BUCKS?

Customers will redeem Chamber Bucks at participating businesses toward a single purchase of equal or greater value. They are not redeemable for cash. After you accept a valid Chamber Buck at your place of business from a customer for goods and services, you may go ahead and cash the Chamber Bucks just as you would any check. This is an exciting change to our program.

WHERE CAN I BUY CHAMBER BUCKS?

Chamber Bucks can be purchased at the Wahpeton Breckenridge Chamber of Commerce office during regular business hours.

HOW DO I BECOME A PARTICIPATING BUSINESS?

To become a participating business, you need to be a member in good standing of the Wahpeton Breckenridge Chamber of Commerce. There is no charge for being a participating business. This program is offered as a benefit of your chamber membership.



**Wahpeton
Breckenridge**

CHAMBER OF COMMERCE

1505 11th St. N. | Wahpeton, ND 58075
701-642-8744 | lisa@wbchamber.net
www.wbchamber.net

**SCAN THE CODE TO VIEW
PARTICIPATING
CHAMBER BUSINESSES**



Advertise on the Chamber Digital Sign!

**YOU'VE DRIVEN BY OUR AWESOME
DIGITAL SIGN ON 11TH AND WANT
TO ADVERTISE ON IT?**

Now you can!

Available to Chamber Members only



**Wahpeton
Breckenridge**

CHAMBER OF COMMERCE

\$175.00 - 2 weeks

\$300.00 - 4 weeks

Use your design or we will help you make one.

We will continue to run Member logos throughout the year as a perk of being a member.

(701) 642-8744

Please call, email or stop by the Chamber to start advertising your business!



**Wahpeton
Breckenridge**

CHAMBER OF COMMERCE

DIGITAL SIGN AD AGREEMENT

Advertise with us on our Digital Sign! Each slide runs for the duration of the contract for 7 seconds per 42-48 second rotation, 24 hours a day/7 days a week. This means your ad is seen at least once a minute with over 700 views 8am-8pm. That's a ton of exposure!!

Business/Organization Name: _____

Contact Person: _____

Address: _____

Telephone: _____

Email: _____

AGREEMENT DURATION (CIRCLE ONE): TWO WEEKS: \$175 FOUR WEEKS: \$300

START DATE: _____ **END DATE:** _____

MESSAGE (8 - 10 WORDS): _____

CAN YOU PROVIDE A HIGH RESOLUTION GRAPHIC OR LOGO TO BE DISPLAYED (CIRCLE ONE)? YES NO

SIGNED CONTRACT AND PAYMENT IS DUE IN FULL BEFORE THE AD RUNS. MAKE CHECKS PAYABLE TO WB CHAMBER. THE DIMENSIONS FOR THE SLIDE ARE 750 X 360 PX OR GREATER THAN 30 KB FILE SIZE.

Signature: _____ Date: _____

Printed Name: _____

The Wahpeton Breckenridge Chamber of Commerce reserves the right to not publish any information, ads, content, etc. that does not follow our standards. We reserve the right to remove content alleged to be infringing, inappropriate, distasteful, misleading, incorrect, etc. without prior notice, at our sole discretion, and without liability to you. Staff time and resources are limited – we may not be able to accommodate all ad requests. These terms and conditions are applicable to you upon your accessing the website and/or contacting the chamber office. These terms and conditions, or any part of them, may be terminated by the chamber without notice at any time, for any reason. Please note that the following opportunities are only available to chamber members in good standing. I am committed to pay the entire amount for my selected duration of the ad, with no option available for early termination, and that there are no refunds.



**Wahpeton
Breckenridge**

CHAMBER OF COMMERCE

WEBSITE BANNER AD AGREEMENT

With thousands of monthly visitors, the Chamber's website is a great way to share your message with the areas leading professionals. Place your ad today on one of our most visited pages. It is very cost-effective and a fast way to market your products, services or events. Use this marketing method to drive traffic to your website and help build your search engine rankings.

Business/Organization Name: _____

Contact Person: _____

Address: _____

Telephone: _____

Email: _____

WEBSITE PAGE (CIRCLE ONE): LANDING PAGE: \$250/MO RELOCATION PAGE: \$200/MO SIGNATURE EVENTS PAGE: \$200/MO

START DATE: _____ **END DATE:** _____

MESSAGE (8 - 10 WORDS): _____

CAN YOU PROVIDE A HIGH RESOLUTION GRAPHIC OR LOGO TO BE DISPLAYED (CIRCLE ONE)? YES NO

SIGNED CONTRACT AND PAYMENT IS DUE IN FULL BEFORE THE AD RUNS. MAKE CHECKS PAYABLE TO WB CHAMBER. THE DIMENSIONS FOR THE SLIDE ARE 1170 X 150 PX.

Signature: _____ Date: _____

Printed Name: _____

The Wahpeton Breckenridge Chamber of Commerce reserves the right to not publish any information, ads, content, etc. that does not follow our standards. We reserve the right to remove content alleged to be infringing, inappropriate, distasteful, misleading, incorrect, etc. without prior notice, at our sole discretion, and without liability to you. Staff time and resources are limited – we may not be able to accommodate all ad requests. These terms and conditions are applicable to you upon your accessing the website and/or contacting the chamber office. These terms and conditions, or any part of them, may be terminated by the chamber without notice at any time, for any reason. Please note that the following opportunities are only available to chamber members in good standing. I am committed to pay the entire amount for my selected duration of the ad, with no option available for early termination, and that there are no refunds.

Introducing



LIVE. WORK. PLAY. LEARN

Follow us! @SOUTHERNVALLEYLIFESTYLE



WWW.SOUTHERNVALLEYLIFESTYLE.COM

2022

ANNUAL BUSINESS Awards

Make your Nomination!

NOW ACCEPTING NOMINATIONS THROUGH MONDAY, DECEMBER 19

MARK WERRE COMMUNITY SERVICE AWARD

THE AWARD WAS ESTABLISHED IN 1991 BY THE WERRE FAMILY IN HONOR OF MARK'S LIFE OF COMMUNITY SERVICE. MARK WAS A 1966 GRADUATE OF WAHPETON HIGH SCHOOL. HE WORKED FOR THE U.S. PUBLIC HEALTH SERVICE. THIS AWARD RECIPIENT IS GIVEN TO A PERSON, PERSONS, GROUP OR ORGANIZATION WHO HAS DISPLAYED CONSPICUOUS SERVICE AND DEDICATION TO THE COMMUNITY. WE ARE SEEKING NOMINATIONS FOR THIS YEAR'S AWARD.

SPARK PLUG AWARD

THIS AWARD GOES TO A BUSINESS (USUALLY A NEW BUSINESS) OR A PERSON WHO HAS SHOWN AN EXTRA "SPARK OF ENTHUSIASM" FOR OUR COMMUNITY IN THE PAST YEAR THROUGH ACTIVITIES, PROACTIVE BUSINESS PRACTICES, OR FORMING POSITIVE RELATIONSHIPS THAT BENEFIT THE COMMUNITY.

BUSINESS OF THE YEAR

NOMINEE SHOULD INCLUDE THOSE BUSINESSES WHO HAVE DEMONSTRATED OUTSTANDING LEADERSHIP, BUSINESS ACUMEN, AND PROFESSIONALISM WITHIN OUR COMMUNITY. CRITERIA INCLUDE: 1. DEMONSTRATED SUCCESS IN AREAS INCLUDING EMPLOYMENT, SALES AND INNOVATION 2. DEDICATION TO QUALITY, CUSTOMER SERVICE, AND COMMITMENT TO EMPLOYEES 3. EVIDENCE OF CONTRIBUTION TO THE COMMUNITY AND COMMUNITY-ORIENTED PROJECTS 4. ADDITIONAL INFORMATION SUCH AS HURDLES OVERCOME, INNOVATIVE MANAGEMENT TECHNIQUES, PREVIOUS AWARDS WON, ETC.

NON-PROFIT OF THE YEAR

NOMINEES OF THIS COMMUNITY SERVICE AWARD SHOULD HAVE DISPLAYED INSPIRING VISION, FOSTERED COLLABORATION, AND EMBODIED COMMUNITY SERVICE AS DEMONSTRATED THROUGHOUT THEIR GOOD WORK WITHIN OUR COMMUNITY. CRITERIA INCLUDES 1. EVIDENCE OF CONTRIBUTION TO THE COMMUNITY THROUGH COMMUNITY-ORIENTED PROJECTS 2. PROVIDING PROFESSIONAL EXPERTISE OR PERSONAL TALENTS TO THE COMMUNITY 3. ENGAGING IN CIVIC AND/OR COMMUNITY ACTIVITIES THAT PROMOTE THE COMMUNITY, OUR RESIDENTS, BUSINESSES, AND EDUCATIONAL FACILITIES.

CHAMBER SERVICE AWARD

THIS AWARD IS PRESENTED TO A CHAMBER MEMBER WHO HAS PROACTIVELY DEMONSTRATED EXTRAORDINARY ENTHUSIASM FOR OUR ORGANIZATION THROUGH VOLUNTEERISM, AND PARTICIPATION IN CHAMBER ACTIVITIES AND/OR COMMITTEES. THIS NOMINEE SHALL ALSO HAVE ACTED AS A NOTABLE POSITIVE "AMBASSADOR" FOR OUR CHAMBER THROUGH INTERACTIONS WITH THE PUBLIC AND OTHER MEMBERS.

LIFETIME ACHIEVEMENT BUSINESS AWARD

THE PURPOSE OF THIS AWARD IS TO GIVE RECOGNITION TO A BUSINESS OR PERSON WHO HAS BEEN A DEDICATED AND POSITIVE FORCE IN THE WAHPETON BRECKENRIDGE BUSINESS COMMUNITY FOR SEVERAL DECADES.



**Wahpeton
Breckenridge**

CHAMBER OF COMMERCE

*For nominations go to:
www.wbchamber.net*

2022

ANNUAL BUSINESS *Awards*

SPONSORSHIP OPPORTUNITIES

CORPORATE SPONSOR - \$500

- LOGO RECOGNITION IN THE EVENT PROGRAM
- TABLE TENTS AT THE EVENT WITH LOGO
- LOGO IN PRINT AND SOCIAL MEDIA ADVERTISING
- RECOGNITION ON DIGITAL SIGN
- LOGO RECOGNITION ON DIGITAL SIGN
- RECOGNITION DURING RADIO INTERVIEW
- RECOGNITION AT THE EVENT

AWARD WINNER SPONSOR - \$200

- LOGO RECOGNITION IN THE EVENT PROGRAM
- TABLE TENTS AT THE EVENT WITH LOGO
- NAME IN PRINT AND SOCIAL MEDIA ADVERTISING
- RECOGNITION AT THE EVENT



**Wahpeton
Breckenridge**

CHAMBER OF COMMERCE

2022

ANNUAL BUSINESS
Awards

SPONSORSHIP APPLICATION

MY BUSINESS WOULD LIKE TO SPONSOR AT THE INDICATED LEVEL:

_____ Corporate Sponsor (\$500)

_____ Award Winner Sponsor (\$200)

BUSINESS INFO:

Business Name: _____

Primary Contact: _____

Email: _____

Phone Number: _____

*Sponsorship levels approved on a first-come first-served basis. Payment must be received to hold sponsorship level. Please be able to provide a hi resolution PDF of your company logo.

MAIL APPLICATION & CHECK TO:

WB Chamber of Commerce - 1505 11th St N - Wahpeton, ND 58075
Additional Questions Contact: lisa@wbchamber.net or call 701-642-8744

KEEP THE

Cheer **HERE!**


#SHOPWAHPBRECK

NOVEMBER 28TH - DECEMBER 23RD

\$2000 Giveaway!

GIFT LOCAL CONTEST

The Wahpeton Breckenridge Chamber of Commerce & Twin Town Business Partners is giving away LOTS of Chamber Bucks this Holiday season! Daily drawings will be held at various businesses throughout the event to enter in for a chance of their part of \$2000. The more you shop local...the more chances you have to win!

-  Register at participating businesses with a minimum purchase of \$20 to win Chamber Bucks giveaways throughout the event. One registration per purchase only.
-  On the participating business "Keep the Cheer Here" day they will draw one lucky winner to win a \$100 Chamber Bucks giveaway.
-  The Chamber will be draw for the grand prize winner of \$300 Chamber Bucks on December 23rd. All winners will be contacted by phone.

**FOLLOW US ON FACEBOOK
FOR UPDATES**



KEEP THE

Cheer **HERE!**

#SHOPWAHPBRECK

\$2000 Giveaway!

FEATURED BUSINESS OF THE DAY

S	M	T	W	T	F	S
	28	29	30	1	2 \$100 Total Personality	3 \$100 Fryn' Pan
4	5 \$100 Slims	6 \$100 Breck Drug	7 \$100 City Brew	8 \$100 Hallmark	9 \$100 Country Financial	10 \$100 RDAG
11	12 \$100 Breck Teen Center	13 \$100 Brüders Butcher	14 \$100 Drifter Chic Boutique	15 \$100 Boiler Room	16 \$100 Bold Print	17 \$100 Studio 22
18	19 \$100 Healing Arts	20 \$100 Red River Comm	21 \$100 Golden Rule	22 \$100 Indigo Life + Style	23 \$300 WB Chamber	25



**Wahpeton
Breckenridge**

CHAMBER OF COMMERCE



www.wbchamber.net

events - calendar

Calendar of Events

For a complete list of community events please see our events calendar on our website at www.wbchamber.net. Also "like" the Wahpeton Breckenridge Facebook page for the most complete list of updates and announcements.

CONTACT US

Wahpeton Breckenridge Area Chamber of Commerce
1505 11th Street N
Wahpeton, ND 58075

Phone - 701-642-8744
Fax - 701-642-8734

Lisa Kunkel - Executive Director
lisa@wbchamber.net
Allison Karlgaard - Executive Assistant
allison@wbchamber.net

WWW.WBCHAMBER.NET

JOIN US FOR STORYTIME

Thursdays at 10:30 AM



Find Us Here:

Breckenridge Public Library

205 7th St N.

218-643-2113 | breckenridge@larl.org



LAKE AGASSIZ
REGIONAL LIBRARY

LEGO DRIVE

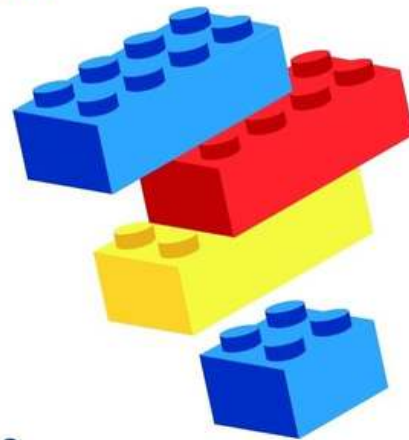
WE ARE PARTNERING WITH
DO IT WELL

NOW ACCEPTING DONATIONS FOR
NEW LEGOS TO BENEFIT LOCAL KIDS IN
OUR HOSPITALS

SEE OUR FACEBOOK PAGE FOR THE
FULL STORY



DO IT WELL



 **healing arts**
CHIROPRACTIC

BC Disposal



We have Roll-off Dumpsters for New Construction, Remodels or Major House Clean Outs.

For more information give us a call or go on our website and book online.

Barry: 701-899-1867

Office: 701-672-0277

Website: www.bc-disposal.com

BC Disposal 701-672-0277
www.bc-disposal.com

BC Disposal 701-672-0277
www.bc-disposal.com

BC Disposal 701-672-0277
www.bc-disposal.com

BC Disposal 701-672-0277
www.bc-disposal.com

BC Disposal 701-672-0277
www.bc-disposal.com

BC Disposal 701-672-0277
www.bc-disposal.com

BC Disposal 701-672-0277
www.bc-disposal.com

BC Disposal 701-672-0277
www.bc-disposal.com

BC Disposal 701-672-0277
www.bc-disposal.com

BC Disposal 701-672-0277
www.bc-disposal.com

BC Disposal 701-672-0277
www.bc-disposal.com

BC Disposal 701-672-0277
www.bc-disposal.com

HOLIDAY LANE

at CHAHINKAPA

Wahpeton, North Dakota

Lights *Photobooth* *Santa's House* *Music*

November 22 – December 31, 2022



SANTA & MRS. CLAUS

2022 Holiday Lane Appearances

Tuesday, November 22 6:30 – 8:00 pm
(Opening night)

Friday, December 2 6:30 – 8:00 pm

Saturday, December 3 5:00 – 8:00 pm

Friday, December 9 6:30 – 8:00 pm

Saturday, December 10 5:00 – 8:00 pm

Friday, December 16 6:30 – 8:00 pm

Saturday, December 17 5:00 – 8:00 pm



Reasons to join The Business Connection

1. The outside referrals I get from members. I've heard "(TBC member) recommended you" more times than I can count!
2. When I add new products and services, I get to tell 20+ women at one time.
3. The Night of Indulgence event held in November - a great way to market your business to the community.
4. Network with other smart & talented business women.
5. The opportunity to support local business.
6. Grow your business.
7. Name recognition in the community.
8. Fun members!

For more info:

Find us on Facebook [TheBusinessConnection W/B](#)
or contact Sheri Friederichs - President
(701) 403-7164





ENTER FOR A CHANCE TO

WIN A FREE

— 1 YEAR —

MEMBERSHIP

RECEIVE A FREE \$50 GIFT CARD TO OUR CLUB JUST FOR ENTERING



Let's make HEALTHY HAPPEN



Friendly staff



Try us free



Always open



Join one. Join all.

Hey Wahpeton! Anytime Fitness in Wahpeton is NOW under new ownership and they OFFER so much to achieve your goals. We have partnered with Anytime Fitness Wahpeton and by scanning this QR code, you can enter in to win a FREE YEAR with them. Everyone who enters ALSO gets a \$100 gift card to the gym just for entering. Make sure you share, tag, and comment all your family and friends to get entered in. Also make sure you scan the QR code and get your name entered!





VERTIN-MUNSON
FUNERAL & CREMATION SERVICE

BRENDA KLOSTERMAN
Pre-Arrangement Specialist

Cell: (701) 640-0840
Email: Brenda@VertinMunson.com



BRENDA KLOSTERMAN

ADVANCED FUNERAL PLANNER

Brenda specializes in pre-arranged funeral and cremation planning and provides individuals and families with opportunities to explore their final wishes. She also provides valuable information regarding options to set funds aside for burial and cremation expenses.

Brenda offers the following expert advice:

The first step in planning ahead is organizing your vital information and putting your wishes in writing. Having all of these details in one place – and on file with your funeral professional – is of tremendous assistance to your family. It is a gift of love only you can give.

Your file should include:

- Copies of all important documents such as your life insurance policies, birth certificate, marriage license, and military records. Remember, do NOT keep these copies in your safe deposit box because oftentimes the contents are not available to your loved ones until long after they're needed.
- Important biographical details that will help tell your life story. This information will save your family time and added stress.
- Your preferences for services. Whether traditional or non-traditional, there are many details to consider such as flowers, music, favorite readings or scripture, and casket or urn selection. Besides removing this responsibility from your family, it also gives you the opportunity to design the unique service you want, which can be especially meaningful and healing for loved ones.

The second step is determining your pre-funding options. We plan and set aside funds for many things in life, including vacations and retirement. Why not do the same for the inevitable? Death has no schedule, and it can create the burden of unexpected expenses for family members. Setting aside funds for your funeral arrangements ensures that your final wishes can be carried out while allowing loved ones to focus on their journey through grief.

Brenda can provide you with the information you need to make informed and thoughtful decisions. She is available to meet with business groups, individuals and families by appointment and can be reached by calling her at 701-640-0840.



JOSEPH VERTIN & SONS
FUNERAL HOME
BURIAL - CREMATION - MONUMENTS

303 5th St. N • Breckridge, MN 56520
www.JosephVertinAndSons.com

BRENDA KLOSTERMAN
Pre-Arrangement Specialist

Cell: (701) 640-0840 • Office: (218) 643-5593
Fax: (218) 641-5831
E-mail: brenca@josephvertinandsons.com



DID YOU KNOW THAT THE LEACH HOME OFFERS ADULT DAY CARE?

Adult Day Care

Are you a full-time caregiver who could use a little break? Worried about leaving your loved one home alone during the day? We can help! The Leach Home now offers Adult Day Care. Provided are, a fully furnished, private room, including a refrigerator, television, and private bathroom, along with fully staffed medical professionals. We have daily rates, so you can pick and choose the days. No lease or contracts to sign! Stop by anytime. The doors are always open. We would love to visit with you and help create a plan for your needs. Please check out our website at the link provided below.

<https://www.theleachhome.org>

**Fully staffed
medical
professionals**

**Full day of activities
including exercise**

**Three meals
and three snacks
daily**

**Two resident cats for
lap hugs if desired**

**Down time for cat
naps if needed**

LEACH HOME

714 4TH ST N

Wahpeton ND

701-642-4233

lndcay@theleachhome.org

Bois de Sioux Adventure Area

Location: Pope Street, south of Favorites Deli & V-Mart off Minnesota Ave (grass clipping/leaf drop off site).

**USE CAUTION ON TRAILS: Slippery & Uneven Ground

**Do NOT use trails when wet



- ★ Trail Head
- ➔ Entrance to trails
- ➔ Entrance to Park
- ➔ Entrance to Boat launch
- ➔ Railroad Tracks



DONATIONS NEEDED for lighting, signage, parking, maintenance of trails and additional amenities!

Facebook: Bois de Sioux Adventure Area

www.breckenridgemn.net/bois-de-sioux-adventure-area





Save the Earth Tree



DECEMBER 6TH

5-7 PM

Drive through Holiday Lane at Chahinkapa Park on your way to the Ehnstrom Nature Center at Chahinkapa Zoo.

You are invited to make crafts and enjoy hot chocolate and cider!

Take a hayride as well!

Santa will be at the
the Prairie Rose
Carousel from 5-7
PM.

\$2.00 per ride
(ZooBoo carousel
passes accepted)



NORTH DAKOTA STATE COLLEGE OF SCIENCE

Performing Arts

2022-2023 SCHEDULE

Fall Music Concert

October 25 • 7:30 p.m.

**Holiday Music
Concert**

December 6 • 7:30 p.m.

**Spring Drama
Production**

March 27-31

Spring Music Concert

April 18 • 7:30 p.m.

**Wildcat Singers &
Jazz Band Concert**

May 2 • 7:30 p.m.

NDSCS



@NDSCSarts



@NDSCS.PerformingArts

FREE WILL BOOK SALE

Generously donated pre-owned books for sale featuring discussions of art, artists, and step-by-step instruction manuals.

All proceeds go directly to Gallery Operations.



418 Dakota Ave

Wahpeton, ND 58075

701-591-1010

rdag@midconetwork.com



The Red Door Art Gallery
is pleased to present



**Winter Celebration
Exhibition:**

Nov. 15 - Jan. 7

HOME
BY LAURA VONBANK

Artisan Showcase:

Dec. 3 & 10

Featured artists:

Brenda Luthi

Sherri Kruger-Kukowski

Joan Fredericksen



For more information give us a call or
visit our website.



418 Dakota Avenue, Wahpeton, ND

(701) 591-1010

See's CANDIES®

Asst Chocolates Gift Box.....	\$27.50
Peanut Brittle	\$9.25
Toffee-ettes.....	\$27.50
Assorted Peppermints.....	\$13.75
Sleigh Boxes.....	\$11.00
Peanut Brittle	\$9.25
Milk Chocolate Candy Bars.....	\$2.00
Lollypops.....	\$2.00



Nov. 12 - Jan. 7

Vault Sale

The Red Door Art Gallery
will be having a sale of
generously donated pre-
owned artwork at greatly
reduced prices beginning

**November 12 -
January 7**

All proceeds go directly
to Gallery Operations.

418 Dakota Ave

Wahpeton, ND 58075

701-591-1010

rdag@midconetwork.com



HOLIDAYS AT PINEWOOD KENNELS

DECEMBER 10, 2022
10AM-2PM

- PET PHOTOS WITH SANTA
- ON THE SPOT ORNAMENTS
(COURTESY OF BURKETT
CUSTOMS) \$20
- PET ID TAGS \$10
- DRINKS (FREE!)
- \$5 NAIL TRIMS
- TOUR OF KENNEL REMODEL
- AND MORE!

★ ★ FREE WILL DONATION FOR
PHOTOS - PROCEEDS TO F5
PROJECT ★



Purse Swap

\$20 Entry Fee to support **BIO Girls**
Where women support & inspire youth girls!

Bring a gently used, clean purse and leave with another of your choice. Numbers will be drawn randomly to determine purse selection order starting at 5:45pm.

While you wait, Jules - handcrafted leather earrings will have sales and an earring making station, along with other pop-ups. There will also be a cash bar and appetizers available. Come enjoy the fun evening with friends, leave with a "new to you" purse, and support an amazing non profit!

AT THE CITY BREW HALL
WAHPETON, ND
THURSDAY, DECEMBER 15TH
FROM 5:30PM-7:30PM



JOIN FIT AND STRONG!

TO IMPROVE THE QUALITY OF YOUR LIFE



Register NOW!

Fit & Strong! is an exercise/behavior change program for older adults or those with lower extremity osteoarthritis.

Includes 60-minutes of exercise, and 30-minutes of group discussion/health education.

- Manage arthritis
- Exercise safely
- Decrease joint pain & stiffness
- Improve daily function
- Reduce anxiety & depression
- Develop & maintain an active lifestyle

Begins Wednesday

January 4, 2023

Meets every Monday and Wednesday for 12 weeks (Last class April 5)

9 a.m. to 10:30 a.m.

Wahpeton Community Center
304 5th St. S., Wahpeton



Registration required!

*****CALL OR EMAIL*****

Class will be limited to 15 participants

Ronda Gripentrog, Extension Agent
NDSU Extension/Richland County
701.642.7793

ronda.gripentrog@ndsu.edu



Celebrate **VELMA'S 50TH**
TAX SEASON 1973 - 2023

Join us for Soup and Goodies
FRIDAY, JANUARY 6, 2023 11-2PM
Free will donations benefiting
Richland Wilkin Food Pantry
Building Renovation Fund

211 Dakota Avenue | Wahpeton, ND 58075
(Across from St. John's Church)
Ph. 701-642-2128

**H&R
BLOCK**

**Expert tax prep
in person or virtually.**

**Flexible hours.
Extra income.
Meaningful work.**

Learn more about our seasonal positions.

NOW HIRING:

- Experienced Tax Pros
- First-Year Tax Pros
(paid training)
- Receptionists

APPLY AT:

H&R Block
211 Dakota Ave.
Wahpeton, ND 58075
701-642-2128

**H&R
BLOCK**



Luck of the Irish



BINGO



Bar Pull  Silent Auction

Saturday, January 14, 2023

Wahpeton Community Center

\$50 per ticket

Includes one drink, dinner
& 12 bingo games!

**Proceeds support the Wahpeton FFA Chapter's
trip to Ireland in Summer 2023!**

Social Hour  **4pm**

Dinner  **5pm**

Bingo  **6pm**

Must be 21 Years Old to Attend.
Please bring a valid ID. Bar Service Available.
Authorized by City of Wahpeton
Permit #GC-1726.

Apple AirPods Pro and Apple Watch series 7
1/16 John Deere Tractor + \$150 Gift Card
Bruders Butcher \$250 Gift Card
Ninja Foodi 10 Qt - 6 in 1
Ring Doorbell with Echo
50" Amazon Fire TV
Milwaukee Drill Set
iRobot Roomba 692
Michael Kors Purse
Traeger Tailgator
Coach Purse
Fire Ring

BINGO
Prizes

**For tickets, email heather.woods@k12.nd.us
or call 701-672-5067.**

*Building better
communities
by fighting against food
insecurity*

ONE CLIENT'S STORY

No two Food Pantry clients are alike, but the need is real. We'd like to share the story of one of our clients, John.

Late one Monday afternoon we received a call from John, a single dad of four children and the sole supporter of his family. It was almost the end of our operating hours and he asked how long we would be open.

He went onto explain that he wanted to cook supper for his family that night, but had used all his groceries the previous day. Fortunately he would be paid the next day, but needed to feed his family that night.

John arrived at the pantry before closing time and a volunteer guided him around the pantry helping him with the food selection. John expressed his thankfulness many times to the volunteers that evening. He was so happy to be able to go home that evening and feed his family.

John seldomly uses the Food Pantry services and has done so only when his needs are the greatest.

Many of our clients comment "I didn't think I would ever be here".



**RICHLAND WILKIN
EMERGENCY FOOD PANTRY**
699 8th Ave. S
Wahpeton, ND 58075

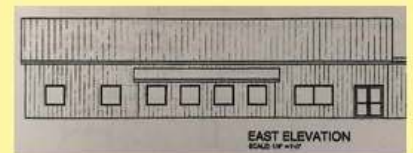
701-642-1921

rwfoodpantry@outlook.com

[Facebook.com/rwfoodpantry](https://www.facebook.com/rwfoodpantry)



***"EXPANDING THE
FIGHT AGAINST
FOOD INSECURITY"***



WHAT IS THE RWEFP?

- ◆ The **Richland Wilkin Emergency Food Pantry** provides an emergency food supply to those in need in the 20 towns and rural areas of Richland County, ND Wilkin County, MN.
- ◆ The **RWEFP** has served the community for almost 40 years.
- ◆ The **RWEFP** is located on the south side of Wahpeton.
- ◆ The **Food Pantry** is open to serve clients 4 days a week.

WHO DO WE SERVE?

- ◆ Family Units
- ◆ College students
- ◆ Senior citizens
- ◆ K-12 students
- ◆ People with health issues
- ◆ Working families experiencing unexpected circumstances
- ◆ Anyone in need



Expanding the fight against food insecurity

RWEFP QUICK FACTS

- ◆ We served close to 500 clients a month in 2021.
- ◆ Over 300 students receive weekend food through the Backpack Program.
- ◆ Over 80 tons of food was distributed in 2021 (which equals the weight of an African elephant every month!).
- ◆ Our mobile unit serves Fairmount, Lidgerwood and Rothsay once per month.
- ◆ We operate with only one part-time paid employee and over 30 volunteers.
- ◆ Funding comes from grants, business donations and donations from individuals.



Current warehouse

FOOD PANTRY ADDITION & REPAIR PROJECT

Planning for a building update began in 2018 and includes these plans:

- ◆ **Construction** of an addition to the current pantry to include space for food distribution, operations of the school backpack program and warehouse space for our food supply.
- ◆ **Demolition** of the current storage building/shed that has failed.
- ◆ **Repair** of the roof on the existing pantry so it can be converted to warehouse space.

HOW ARE WE FUNDING THE EXPANSION PROJECT?

- ◆ We have secured some grant funding and donations.
- ◆ We are actively seeking other available grants and funding sources.
- ◆ We have been setting funds aside.
- ◆ We are asking community businesses and individuals for donations.

WE ONLY NEED TO RAISE \$150,000 IN ADDITIONAL FUNDS TO MEET OUR GOAL!

WITH YOUR HELP THE RWEFP CAN:

- ◆ Address safety concerns for all clients & volunteers in our facilities.
- ◆ Comply with ADA standards.
- ◆ Create adequate & safe storage.
- ◆ Add a demonstration kitchen/classroom to provide clients with additional cooking and nutrition information.
- ◆ House our programs in one location.

DONOR LEVELS

\$1000 Plus Dessert
\$500 - 999 Dinner
\$100 - 499 Lunch
\$ 20 - 99 Breakfast
Under \$20 Snack



DONOR LEVELS

\$1000 Plus Dessert
\$500 - 999 Dinner
\$100 - 499 Lunch
\$ 20 - 99 Breakfast
Under \$20 Snack



DONOR LEVELS

\$1000 Plus Dessert
\$500 - 999 Dinner
\$100 - 499 Lunch
\$ 20 - 99 Breakfast
Under \$20 Snack



**BUILDING FUND
DONATION FORM**

Name(s): _____

Address: _____

City: _____

State: _____ Zip: _____

Phone: _____

Email: _____

Date: _____

Total Donation \$ _____

I wish my donation to be anonymous
____ Yes ____ No

____ Cash ____ Check Ck. # _____

**BUILDING FUND
DONATION FORM**

Name(s): _____

Address: _____

City: _____

State: _____ Zip: _____

Phone: _____

Email: _____

Date: _____

Total Donation \$ _____

I wish my donation to be anonymous
____ Yes ____ No

____ Cash ____ Check Ck. # _____

**BUILDING FUND
DONATION FORM**

Name(s): _____

Address: _____

City: _____

State: _____ Zip: _____

Phone: _____

Email: _____

Date: _____

Total Donation \$ _____

I wish my donation to be anonymous
____ Yes ____ No

____ Cash ____ Check Ck. # _____

**Richland Wilkin Emergency
Food Pantry
Building Fund
699 8th Ave. S
Wahpeton, ND 58075**

**Richland Wilkin Emergency
Food Pantry
Building Fund
699 8th Ave. S
Wahpeton, ND 58075**

**Richland Wilkin Emergency
Food Pantry
Building Fund
699 8th Ave. S
Wahpeton, ND 58075**