



Wahpeton Breckenridge

CHAMBER OF COMMERCE

Chamber Board of Directors

Jodi Hendrickson - President

Edward Jones

Edd Goerger - Vice President

Heartland Insurance

Jim Cornelius - Secretary

Benedictine Living Community

Amy Ziegler - Director

Wahpeton Drug & Gift

Chris Kappes - Director

Circle of Nations

Angela Cruff - Director

Blue Cross Blue Shield

Becky Dockter - Director

OSPTI

Kory Kaste - Director

First Community Credit Union

Tana Erbes - Director

NDSCS

Mary Wolfram - Director

Twin Town Villa

Gail Grant - Director

CHI St. Francis Health

Staff

Lisa Kunkel - Executive Director

Allison Karlgaard - Executive Assistant

Chamber Helps Businesses Grow Through Social Media

The chamber's Facebook page is a leading source of information to the Twin Towns and surrounding communities. We have worked very hard to grow our presence and help our members get recognized. Our number of followers and engagement has continued to increase each month. Being a chamber member gives you inside access to a large, active online community of followers. People visit our Facebook and Instagram pages to find out what's going on in the community and to seek local resources.

As a member of the chamber, we encourage you to let us know if you have a post you'd like us to share or an event that we can help you promote. We also do business spotlights and welcome new chamber members on our social media pages. We make it our business to know how social media works in our area. Unlike national social media gurus, we know what works specifically in our community. We know the key players and what makes for popular posts.

A business community is comprised of the chamber and businesses working together not just for the betterment of their own wallets but the town in general. Being a part of the chamber story helps lend credibility to your mission, shows a desire for civic-mindedness, and illustrates how you are part of something larger than yourself.

There are all sorts of ways you can work with the chamber to help spread your story and be a part of theirs as well. There are many exciting things we are doing on social media and you should be a part of it.

Social media changes seemingly daily and it's difficult for business owners to keep up with the changes. The Wahpeton Breckenridge Area Chamber of Commerce offers an array of social media benefits for your business. It's one of those many secrets that people don't initially think about but are glad for when they join the chamber. Find out more about what the chamber can do for your business and your social media exposure.

Welcome To Our New Chamber Members



MEMBER Spotlight



SCIENCES
RHONDA THIEL
701.640.3102 | thielranch@gmail.com
www.shop.myqsciences.com/RhondaThiel

Check out QSciences at 614 Dakota Avenue Suite 103 for all your wellness and nutritional supplement needs.

WAHPETON BRECKENRIDGE

CHAMBER BUCKS



shop local. eat local. spend local. enjoy local

The Chamber Bucks Program is getting an exciting new update for 2022. Chamber Bucks will now be distributed as an actual check that businesses will be able to deposit and will eliminate the need to request reimbursement from the Chamber office. Watch your email for more details coming soon.

The Wahpeton Breckenridge Chamber of Commerce is happy to offer the Chamber Bucks Program to the Twin Town Communities. The Chamber Bucks Program is designed to keep dollars local. They are great as employee incentives/rewards, giveaways or gifts from friends and family. Anyone can buy Chamber Bucks. They can be purchased at the Wahpeton Breckenridge Chamber of Commerce office in \$5, \$10 and \$20 denominations and used for goods and services at participating businesses in the Twin Towns.

WHERE CAN I USE CHAMBER BUCKS?

Chamber Bucks can be used for products and services at participating chamber member businesses in Wahpeton and Breckenridge. Please scan the QR Code below to view all participating members.

HOW DO I USE CHAMBER BUCKS?

Customers will redeem Chamber Bucks at participating businesses toward a single purchase of equal or greater value. They are not redeemable for cash. After you accept a valid Chamber Buck at your place of business from a customer for goods and services, you may go ahead and cash the Chamber Bucks just as you would any check. This is an exciting change to our program.

WHERE CAN I BUY CHAMBER BUCKS?

Chamber Bucks can be purchased at the Wahpeton Breckenridge Chamber of Commerce office during regular business hours.

DO CHAMBER BUCKS EXPIRE?

Chamber Bucks can be purchased at the Wahpeton Breckenridge Chamber of Commerce office during regular business hours.

HOW DO I BECOME A PARTICIPATING BUSINESS?

To become a participating business, you need to be a member in good standing of the Wahpeton Breckenridge Chamber of Commerce. There is no charge for being a participating business. This program is offered as a benefit of your chamber membership.



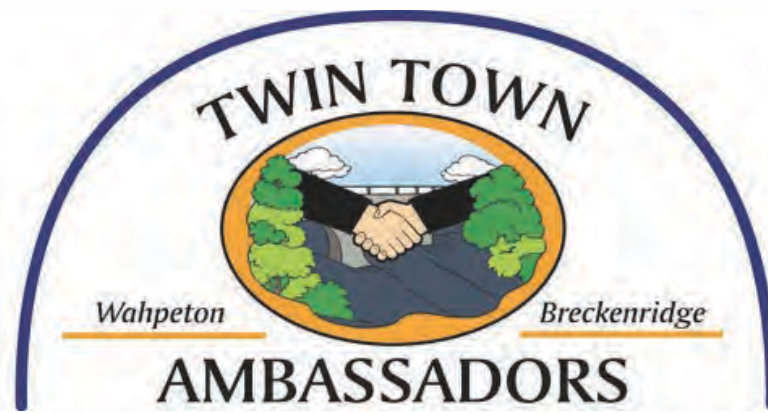
**Wahpeton
Breckenridge**

CHAMBER OF COMMERCE

1505 11th St. N. | Wahpeton, ND 58075
701-642-8744 | lisa@wbchamber.net
www.wbchamber.net

**SCAN THE CODE TO VIEW
PARTICIPATING
CHAMBER BUSINESSES**





Join our Team

We are currently looking to add more ambassadors to our group. The Twin Town Ambassadors meet the 2nd Tuesday of each month at 8:30 am at the chamber office. Being an ambassador is a great way to learn more about what is happening in the businesses in our community.

If you would like to join this fun, energetic group and help us celebrate the milestones of our business community, please feel free to contact us and we'd be happy to give you more information.

Twin Town Ambassadors

Amanda Crouse - President

Bremer Bank

Diana Hermes - Vice President

Daily News

Wendy Kahler - Secretary

Red River Human Services

John Nyquist

Edward Jones

Carla Broadland

City of Wahpeton

Brittany Myhra

Chahinkapa Zoo

Mary Wolfgram

Twin Town Villa

Kory Kaste

First Community Credit Union

Rachel Bertelsen

WCCO Belting, Inc

Brittany Finnie

Nielsen Electric TV & Appliance Center

Mitch Ronan

Bell Bank

Jenna Lovgren

Red River Communications

Annie Sauvageau

CAPLP

Lindsay Auwarter

Leach Home

Mandy Steinberger

Breckenridge Family Comm. Center

Tony VanDyke

Thrivent Financial

Farah Grey

Econo Foods

Judy Comings

Healing Arts Chiropractic

Ashley Mohs

First Community Credit Union

Julie Rosenberg

Essentia Health

Chelshey Grandstrand

Richland Title

Rhonda Thiel

QSciences



Welcome to the newest 2022 Ambassador



Chelshey Grandstrand
Richland Title



Welcome to the newest 2022 Ambassador



Rhonda Thiel
QSciences

Advertise on the Chamber Digital Sign!

**YOU'VE DRIVEN BY OUR AWESOME
DIGITAL SIGN ON 11TH AND WANT
TO ADVERTISE ON IT?**

Now you can!

Available to Chamber Members only



**Wahpeton
Breckenridge**

CHAMBER OF COMMERCE

\$175.00 - 2 weeks

\$300.00 - 4 weeks

Use your design or we will help you make one.

We will continue to run Member logos throughout the year as
a perk of being a member.

(701) 642-8744

Please call, email or stop by the Chamber to
start advertising your business!

BORDERLINE

CHALKFEST

WAHPETON, ND - BRECKENRIDGE, MN



JULY 9 & 10

FREE ADMISSION & PARTICIPATION

SCAN ME!



ART - FOOD - FAMILY FUN

SPONSERED BY:



ORGANIZED BY WAHPETON BRECKENRIDGE CHAMBER OF COMMERCE

BORDERLINE

CHALKFEST

WAHPETON, ND - BRECKENRIDGE, MN

SPONSORSHIP OPPORTUNITIES

CHALKFEST CORPORATE SPONSOR - \$3,000 (1 AVAILABLE)

- Company name and logo prominently displayed at various areas throughout the festival including all professional artists' chalk block areas.
- Company name mentioned in radio advertising and interviews.
- Company name and logo on festival posters and printed material.
- Company name and logo on the Chamber's digital sign.
- Two Borderline Chalkfest t-shirts.
- Company name and logo on social media and WB Chamber website marketing.
- Company name displayed on Borderline Chalkfest t-shirts worn by artists and volunteer staff.
- Free vendor space booth.

3D PROFESSIONAL ARTIST SPONSOR - \$750.00 (2 AVAILABLE)

Shawn McCann & Eric Greenawalt have been crowd favorite artists each year at Borderline Chalkfest. Their interactive 3D pieces are fan favorites each year. Only one sponsor per artist.

- Company name & logo displayed at 3D artist's chalk block area.
- Two Borderline Chalkfest t-shirts.
- Company name & logo on social media marketing.
- Company name displayed on Borderline Chalkfest t-shirts worn by artists and volunteer staff.
- Free vendor space booth.

PROFESSIONAL ARTIST SPONSOR - \$500.00 (6 AVAILABLE)

- Company name & logo displayed at a professional artist's chalk block area.
- Two Borderline Chalkfest t-shirts.
- Company name & logo on social media marketing.
- Company name displayed on Borderline Chalkfest t-shirts worn by artists and volunteer staff.
- Free vendor space booth.

AMATEUR ARTIST SPONSOR - \$250.00 (3 AVAILABLE)

Each year our festival hosts amateur artists who are working to achieve professional level. These artists are talented young people who we are fortunate to have join our festival.

- Company name & logo displayed at artist's chalk block area.
- Company name & logo on social media marketing.
- Company name displayed on Borderline Chalkfest t-shirts worn by artists and volunteer staff.
- Free vendor space booth.

COMMUNITY MANDALA SPONSOR - \$150.00 (4 AVAILABLE)

The Community Mandala is a very popular attraction each year at Bordreline Chalkfest. Participation is free to the public. Sandy Forseth spends hours creating a magical piece that children of all ages enjoy helping.

- Company name & logo displayed at Madala block area.
- Company name & logo on social media marketing.
- Company name displayed on Borderline Chalkfest t-shirts worn by artists and volunteer staff.

BORDERLINE



WAHPETON, ND - BRECKENRIDGE, MN

SPONSORSHIP APPLICATION

MY BUSINESS WOULD LIKE TO BE A SPONSOR AT THE LEVEL INDICATED:

_____ Corporate Sponsor (\$3,000.00)

_____ 3D Artist Sponsor (\$750.00)

_____ Professional Artist Sponsor (\$500.00)

_____ Amateur Artist Sponsor (\$250.00)

_____ Mandala Sponsor (\$150.00)

BUSINESS INFO:

Business Name: _____

Primary Contact: _____

Email: _____

Phone Number: _____

*Sponsorship levels approved on a first-come first-served basis. Payment must be received to hold sponsorship level. Please be able to provide a hi resolution PDF of your company logo.

MAIL APPLICATION & CHECK TO:

WB Chamber of Commerce - 1505 11th St N - Wahpeton, ND 58075

Additional Questions Contact: lisa@wbchamber.net or call 701-642-8744



**WHEN YOU SHOP LOCAL YOU
SUPPORT AN ENTIRE
COMMUNITY, NOT JUST A
BUSINESS.**

#shopwahpbreck



**Wahpeton
Breckenridge**

CHAMBER OF COMMERCE



www.wbchamber.net

events - calendar

Calendar of Events

For a complete list of community events please see our events calendar on our website at www.wbchamber.net. Also "like" the Wahpeton Breckenridge Facebook page for the most complete list of updates and announcements.

CONTACT US

Wahpeton Breckenridge Area Chamber of Commerce
1505 11th Street N
Wahpeton, ND 58075

Phone - 701-642-8744
Fax - 701-642-8734

Lisa Kunkel - Executive Director
lisa@wbchamber.net
Allison Karlgaard - Executive Assistant
allison@wbchamber.net

WWW.WBCHAMBER.NET

JOIN US FOR STORYTIME

Thursdays at 10:30 AM



Find Us Here:

Breckenridge Public Library

205 7th St N.

218-643-2113 | breckenridge@larl.org



**LAKE AGASSIZ
REGIONAL LIBRARY**



6th Street North and Beede Avenue, Breckenridge
(218)643-1282 or City Hall (218)643-1431

Available for Use: First Come, First Serve
Sleds
Hockey sticks & pucks
Skate Walkers
Snowshoes & poles
Ice/hockey skate rental \$1/day



Snow Hill ~ Ice Rink ~ Warming House

OPEN HOURS:

Monday thru Friday from 3:15-5:30 pm
and early-out / no school days from
1:15-5:30 pm

Saturdays & Sundays from 1:00-6:00 pm

EVERYONE WELCOME!

Anyone under age 10 must be accompanied by an adult.

Remember to Dress for the Weather!!!!

Food, Snacks and Beverages for sale during open hours!

Follow Us on



@breckenridgefcc

IN SEARCH OF STORAGE SPACE

Does your business have space that isn't being used?

Three Rivers Crisis Center is in search of storage space for our fundraiser and school supply drive storage totes. We would need to access the space periodically to add additional donations and before our events in late summer and fall. Space to fit approximately 15 large totes and 18-20 medium size totes and Christmas tree boxes.

IF YOUR CAN HELP OUT, PLEASE CALL OUR OFFICE BETWEEN 9AM-4PM TO SPEAK TO SUSAN OR BECKY AT 642-2115.



SNOWSHOES with POLES



Available to check out
at Breckenridge City Hall and
Breckenridge Family Community Center

9 total sets available
Weight limit up to 200 pounds

For more information
call (218)643-1431



Breckenridge WELCOME Dog Park

FAMILY COMMUNITY CENTER

Breckenridge
Active
Living
Committee

NOW
OPEN

★ DOUBLE-GATE ENTRANCE
💧 WATER ACCESS

SMALL DOG AREA
UNDER 30 LBS.

LARGE DOG AREA
OVER 30 LBS.

TWIN TOWN SKATE PARK

VETERANS MEMORIAL PARK

BEEDE AVENUE

What is **MOMs of Wahpeton?**

MOMs stands for Moms On a Mission. Whether you're a soon-to-be mom, a first-time mom, or a seventh-time mom, you are welcome here. Whether you're a teen mom, stepmom, seasoned mom, or any type of mom, you're welcome here.

At MOMs, women come together to be encouraged and supported by other moms who are in the same season of life. In an open, caring, and accepting atmosphere, MOMs exists to meet the needs of every mom who shares the desire to be the best mom they can be. MOMs is a place to meet, share, grow, and embrace the journey of motherhood in a faith-centered community.

A typical meeting includes brunch, a speaker, and a craft. Childcare is provided.



WHAT. MOMs meetings for all
local & surrounding area moms

WHEN. 2nd & 4th Tuesdays • 9-11am
(Sept.-May)

WHERE. Faith Church • 1589 11th St. N
Wahpeton, ND



Join our Facebook group:
MOMs of Wahpeton

MOMs of Wahpeton Event:

PRESCHOOL OPEN GYM

First TUESDAY of the
month • 9:30-11a

Children must be supervised.

FAITH CHURCH

• 1589 11TH ST. N, WAHPETON •

**LOCAL TAX
PREPARATION
PROFESSIONALS**
(701) 642-8146



Nadine Julson, LLC
Certified Public Accountants

SUPPORT YOUR LOCAL FOOD SHELF

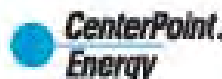
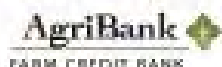
Find your
LOCAL FOOD SHELF
or **DONATE** at
gmcc.org/march-campaign

—00000— FEBRUARY 28TH – APRIL 10TH, 2022 —00000—

Major Minnesota
FoodShare Supporter



March Campaign Sponsors
and Major Supporters



LAND O LAKES, Inc.

MN
Food
Share

MARCH CAMPAIGN



follow us @mnfoodshare



©2022 GMCC (founded as Greater Minneapolis Council of Churches)

AN EQUAL OPPORTUNITY ORGANIZATION



Food Pantry Facts

During 2021 the RWEFP served 5,851 clients.

The monthly average was 487 clients.

The average households per week was 44.

Approximately 30 volunteers give of their time and talents to the RWEFP.

162,701 pounds of food were distributed during the year.

The monthly average was 13,558 pounds.

March and December are the only months when more food is donated than distributed.

During December, RWEFP receives the greatest monetary donations.

Over 300 students receive weekend food through the Backpack Program.

Over \$4000 per month is needed to sustain the Backpack Program.

The mobile unit serves four rural communities, Fairmount, Lidgerwood, Campbell and Rothsay, once a month.

The RWEFP has a healthy food policy with a goal of improving food choices at the pantry.



FILL A BAG FOR OUR LOCAL FOOD SHELF

Respond to food insecurity in our community by filling a grocery bag with much needed food and household items for our local food shelf.

Cereal

Boxed Dinners (Scalloped Potatoes
Au Gratin Potatoes)

ManWich(Sloppy Joes)

Vegetable Oil

Pancake Syrup

BeMobile.

Pay more than
\$29/mo for internet?
Come talk to us!

Visit 715 Dakota Avenue or email hi-there@bemobile.com for more details.

Want to work in
Wahpeton?



We're here to *help!*

NORTH
Dakota | Job Service
Be Legendary.™

The Wahpeton area is *home* to

- **Healthcare**
- **Manufacturing**
- **Government**
- **Transportation**
- **Retail and more**

And we're *hiring!*

Visit us online at
jobsnd.com,
use your camera to view
the QR code at right,
or stop into our office and
visit our friendly staff!



Job Service Wahpeton
524 2nd Ave N
Wahpeton, ND 58075
p: 701.671.1550



January - May 2022
10 AM- 11 AM
709 Dakota Ave Suite B

BEING WELL IS EASY!

By Dr. Schwinghammer

Once a month we will be holding seminars on how we make health too complicated and what to do about it.

January's seminar will be held on 1/22/22. Come learn and win prizes! Bring a friend and both you and your friend will be entered in twice!

Please RSVP: brittanie@healingartsnd.com or text (701) 591-2727

Locally owned and operated.

Thanks for supporting our small business.
211 Dakota Ave. | Wahpeton

**H&R
BLOCK**



CAPLP Tax Site

Breckenridge, MN – CAPLP-Lakes & Prairies Community Action Partnership is proud to serve the community by providing a Volunteer Income Tax Assistance (VITA) site. This year we will serve about 60 households with free tax services which saves families and individuals an average of \$300 each. CAPLP is also conducting tax sites in Barnesville, Moorhead, and Hawley in Minnesota.



CAPLP also offers assistance filing renter's rebates and property refunds starting April 18, 2022. The renter's rebate is a state-paid refund for people whose rent and/or property taxes are high relative to their income. Rent constituting property taxes is assumed to equal 17 percent of rent paid. If rent constituting property taxes exceed a threshold percentage of income, the refund equals a percentage of the tax over the threshold, up to a maximum amount. Renters whose income exceeds \$62,960 are not eligible for refunds. We are now scheduling appointments for renter's rebates and property refunds. Call 218.512.1570 with any questions or to setup an appointment.

CAPLP is also accepting applications for rental, utility, and deposit assistance on an ongoing basis. We also serve pregnant moms and children from birth to age 3 with our Early Head Start Home Visitor Program in Wilkin County. For questions or more information on services offered in Wilkin County please call 218.643.2888.

About CAPLP-Lakes & Prairies Community Action Partnership: Founded in 1965, CAPLP helps struggling families in Northwest Minnesota get back on their feet and climb their way to economic stability. CAPLP utilizes a multi-generational approach working with children, parents, and elders simultaneously to ensure upward mobility for the whole family. This holistic approach helps people build a better future. Over 30 CAPLP programs and services work together to eliminate poverty by empowering families and engaging communities. Learn more at www.caplp.org

Eliminate Poverty • Empower Families • Engage Communities

Administrative Office
891 Belsky Boulevard
Moorhead, MN 56560
Phone: (218) 512-1500
Fax: (844) 215-7287
Toll Free: 1-800-452-3646



Breckenridge Office
311 5th Street S.
Breckenridge, MN 56520
Phone: (218) 643-2888
Fax: (844) 215-7287
Toll Free: 1-800-568-6586



Teen Friends of the Library

*3:30-5:00 PM on the 4th Tuesday of the Month
(beginning January 25th, 2022)*

Hey teens, you're in charge! Join the Teen Friends of the Library group at the Breckenridge Public Library. Gather with other teens aged 11-18 to plan activities, run your own library programming, and practice leadership skills. An adult advisor will be present, but the direction of the group will be up to you.



**BRECKENRIDGE
PUBLIC LIBRARY**
A BRANCH OF LAKE AGASSIZ REGIONAL LIBRARY
205 7th St N • 218-643-2113



*This program is
sponsored by the Friends
of the Breckenridge
Public Library*



PRENATAL FITNESS CLASSES

Level 1 (8-24 weeks gestation)

March 2-April 27

No class Easter Monday April 18

2x/week Mon & Wed 11:15-12:00

\$60/month; \$115/2 months

Level 2 (24-40 weeks gestation)

March 2-April 27

1x/week Wed 12:00-12:45

\$35/month; \$60/2 months

REASONS TO JOIN

Ever wonder what are safe exercises during each stage of pregnancy?

Want to connect and expand social support with other pregnant women?

Learn about changes the body makes during pregnancy and minimize risk of musculoskeletal pain

Decrease risk of urinary incontinence due to pelvic floor dysfunction

This class incorporates belly breathing, core exercises, and functional movement to help maximize function during pregnancy and help with both labor and recovery

Meet your instructor:
Tiffany Blinn

Pelvic Floor Physical
Therapist
Pregnancy &
Postpartum Corrective
Exercise Specialist



OSPTI

ORTHOPEDIC & SPORTS
PHYSICAL THERAPY INC.

CALL 218-641-7725 TO SIGN UP

CHI Health at Home-Hospice is looking for Hospice Volunteers!

We are looking for volunteers to go into our client's homes to provide companionship and other supportive services.



"The best way to find yourself, is to lose yourself in the service of others." -Ghandi



CHI Health at Home
Home Health and Hospice

Please contact Jena Tolbert
at 218-643-2275
for additional information

Q DIGEST

11 ENZYME BLEND

DIGEST



Q DIGEST has 11 natural enzymes designed to speed and ease the digestion of everything in your healthy diet. Better digestion helps you to boost nutrient absorption, leave the “bloat” behind, and enjoy your favorite foods again.



Nature: A modern diet is missing vital enzymes that assist your body with the digestion process. By introducing enzymes found in nature you can get the most from your nutrition.

Science: Our exclusive enzyme blend is designed to ease discomfort and support a more efficient digestion.



Supplement Facts

Serving Size: 1 Capsule
Servings Per Container: 30

	Amount Per Serving	% Daily Value
Proprietary Enzyme Blend	450 mg	*
Breakdown Carbs & Sugar		
Glucosylase, Alpha-Amylase A, Invertase		
Breakdown Protein Nuts & Beans		
Acid Stable Protease, Fungal Protease A, Alpha-Galactosidase S		
Breakdown Wheat & Fiber		
Cellulase, Hemicellulase, Xylanase		
Breakdown Fat & Dairy		
Lactase, Lipase		

* Daily Value not established.

Other Ingredients: Vegetable Cellulose

Caution: If under medical care, nursing or pregnant, consult physician before use.

FEATURES

Our proprietary blend includes:

- Enzymes to breakdown carbs and sugar
- Enzymes to breakdown protein, nuts, and beans*
- Enzymes to breakdown wheat and fiber*
- Enzymes to breakdown fat and dairy*

BENEFITS

- Supports healthy digestion and regularity*
- Supports improved nutrient absorption*
- May ease digestion issues like bloating, gas, cramps, and indigestion*
- May decrease food sensitivities*

This product does not contain Dairy, Eggs, Tree Nuts, Peanuts, Wheat, or Soybeans. Please read carefully to ensure you are not allergic to any listed ingredients.

Suggested Use: Take 1 capsule in the morning or before a meal.



SCIENCES

RHONDA THIEL

701.640.3102 | thielranch@gmail.com
www.shop.myqsciences.com/RhondaThiel

Manufactured exclusively for Q Sciences
365 Garden Grove Lane, Suite 200 Pleasant Grove, UT 84062

*These statements have not been evaluated by the Food and Drug Administration. This product is not intended to diagnose, treat, cure, or prevent any disease. Individual results may vary.



SCHWAN'S
HOME DELIVERY



GET ON THE ROAD TO SUCCESS

Become a Schwan's Home Delivery ROUTE SALES REP today!

Join a team that delivers an independent working environment, supportive culture, positive customer interactions, and job satisfaction on a daily basis.

The Benefits

- ✓ Paid Vacation & Holidays
- ✓ Health, Dental, & Vision
- ✓ Employee Incentive Program
- ✓ 401k with Company Contribution
- ✓ 40% Employee Discount

The Advantages

- + \$37.5k Base Pay + Commission
- + Established Routes
- + Company Stability
- + Supportive Leadership
- + No CDL License Required

**Apply
Today!**

schwans.com/jobs

NEW Updated Hours: 8:30am to 6:30pm!

For details, contact RON WOOD at:
Ph. 218-770-9437 or
Email: Ronald.Wood@cygnusdelivers.com



CONGRATULATIONS

Class of 2022 Graduates

GRADUATION PACKAGES:

5x7 Invitations with blank envelopes

100	150	200	250	300
\$150	\$215	\$260	\$305	\$340

Return address printed on envelopes

100	150	200	250	300
\$25	\$39	\$50	\$63	\$75

Mini Graduation Invitations

2 1/2" x 3 1/2" cards work great for handing out to friends at school! (envelopes not included)

25	50	100
\$10	\$12	\$20

Thank you cards

Postcards:

100	150	200	250	300
\$85	\$110	\$140	\$165	\$195

Fold over style card with blank envelopes:

100	150	200	250	300
\$105	\$185	\$238	\$287	\$330

- Guest addresses printed on envelopes add .20¢ per envelope - properly formatted Excel file to be provided by customer
- Rounded corners add .10¢ per piece

Banners

- Poster paper - \$4 sq. foot
- Glossy paper - \$6 sq. foot
- Vinyl banner - \$7 sq. foot
- Banner Design Fee - \$15

Posters

- Foam core posters - 24 x 36 \$35
- Poster Design Fee - \$15

Yard Signs and Selfie Frames

Yard Signs: 24 x 18 \$17

Selfie Frames: 18 x 24 \$30
24 x 36 \$45

*Price includes design fee and 1 revision

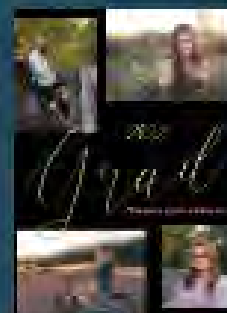
*Prices subject to change

BOLD EP PRINT

118 1/2 6th Street North | Wahpeton, ND 58075
Ph. 701.642.2188 | contact@useboldprint.com
www.useboldprint.com

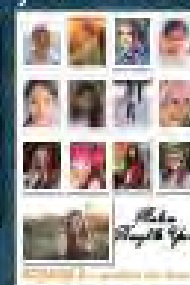
GRADUATION ANNOUNCEMENTS & THANK YOU CARDS

Custom made Graduation announcements and thank you cards. Available in an array of styles & sizes!



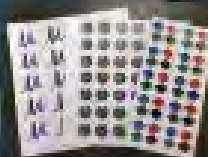
BANNERS, POSTERS, YARD SIGNS

Congratulate your graduate or display their school pictures on a custom made banner, poster and/or yard sign. Available in a variety of sizes & materials.



STICKERS - WRAPPING PAPER CANVAS PRINTS - ADVICE CARDS

Custom contour cut stickers, wrapping paper, window clings & more! Share your favorite photo or create a one-of-a-kind keepsake on a canvas print! Ask guests to leave Words of Wisdom on custom made advice cards.



***Are you looking for ways
to promote your business?***

Is growing your business a goal?

The Business Connection of Wahpeton-Breckenridge is a wonderful connection for women in business. We are a dedicated group of local business owners / employees who are passionate about promoting women-run businesses, each other, and our own business.

We meet on the 2nd and 4th Tuesdays of each month from 7:30 to 8:30 am. We network with each other, share new things happening in our businesses and pass along referrals to our members.

Our main event, our "Night of Indulgence", is a charity event with hors' d'oeuvres, cash bar, door prizes, and networking.

Those of us who have been with TBC have found the networking and NOI to be some of the most rewarding we have ever experienced. We are confident that you, too, will enjoy this affiliation. Please join us for a morning and see if The Business Connection is the right fit for you.

Connect on Facebook for more information: [The Business Connection W/B](#)

The Business Connection of Wahpeton-Breckenridge

Our Mission is to connect businesses for women by fostering mutual success in the areas of profitability, leadership, and both personal and professional growth in a non-competitive arena.

SPRING TRADE-IN SALE!



PLUS...

Find out if the Lucky Number on this letter matches any 1 of 5 winning numbers posted in our store. If it does, you're an instant winner of a **\$100 Cash** just waiting to be claimed!

DELIVERY & PICK-UP OF YOUR OLD TRADE-IN AVAILABLE!

(IN OUR EXTENSIVE TRADE AREA)



318 South 8th Street • Breckenridge, MN 56520
www.slimshomefurnishings.com
218.643.4862

STORE HOURS | Monday - Friday • 9-6
Saturday • 9-5
Sunday Closed

Dear Preferred Customer,



Slim's Home Furnishings has a very special offer just for you! Now through **Saturday, April 16th**, we will not only give you money for your old furniture, but... you will receive **12 Months Interest Free Financing!** We will give you **\$5 OFF** Slim's already low retail prices!

- **\$200 OFF ANY SOFA OR SLEEPER!**
- **\$150 OFF ANY LOVESEAT!**
- **\$100 OFF ANY UPHOLSTERED CHAIR OR RECLINER!**

WHEN YOU TRADE-IN YOUR OLD SOFA, LOVESEAT OR CHAIR REGARDLESS OF CONDITION!*

- **Plus...** if you are not in the market for upholstery, Slim's has three special purchase mattress sets at unheard of savings!

Orthopedic II Mattress **FIBSTONIC**

390 Coils • 3 Year Full Warranty

Twin Mattress - Reg ~~\$349⁹⁹~~ Sale \$199⁹⁹

Full Mattress - Reg ~~\$459⁹⁹~~ Sale \$269⁹⁹

Queen Mattress - Reg ~~\$569⁹⁹~~ Sale \$299⁹⁹

Aviara Euro Top Mattress **FIBSTONIC**

850 Coils • Copper Infused Latex Foam • 15 Year Full Warranty

Queen Mattress - Reg ~~\$1499⁹⁹~~ Sale \$749⁹⁹

King Mattress - Reg ~~\$2219⁹⁹~~ Sale \$1099⁹⁹

Tommie Copper Core Firm **Myriad Mattress**

Infused copper cover to help with relief from pains, aches.

Copper Gel Foam • 789 wrapped coils • 10 year full warranty

Queen Mattress - Reg ~~\$1799⁹⁹~~ Sale \$999⁹⁹

King Mattress - Reg ~~\$2499⁹⁹~~ Sale \$1399⁹⁹

Adjustable Base

M9X732 • Head & Foot Up & Down

Wireless Remote • USB Ports • Adjustable Legs

Queen - Reg ~~\$1499⁹⁹~~ Sale \$749⁹⁹

King - Reg ~~\$2049⁹⁹~~ Sale \$999⁹⁹

All Mattress Sets On Sale!
28 Models on Display!



Week of the Young Child

Thursday, April 7, 2022 5-7 pm

Wahpeton Community Center

SAVE THE PLANET PARTY



**One
HOME**



A Free Family-Friendly Event for you and your young children!

***Recycled crafts, Free books, Free toothbrush,
Meet the Tooth Fairy, Scavenger Hunt, Games,
Plant a Vegetable, Healthy Snacks, Zoo
Animals, and much more!!***

Thank-you to all of our Sponsors: Southern Valley ECI, RSR Human Service Zone, [Chubinkapa Zoo](#), Breckenridge Public Library, Leach Public Library, SENDCAA – Head Start, NDSCS – Dental, CHI St Francis, Area Child Care Providers, Richland County Public Health, Wilkin County Public Health, Wahpeton Parks and Recreation, Wilkin County Family Services, Wahpeton Public School –Early Literacy



****** We are collecting non-perishable items for the Richland-Wilkin Food Pantry***



SAFER Driver's Challenge Driving Class

Wahpeton Community Center
304 5th Street South
Wahpeton, ND 58075

April 14, 2022

Doors open at 12:30 p.m.
Session 1:00 –5:00 pm

Registration ends 4/1/2022:

To register online quickly, conveniently, please visit
www.tristatesafetyassociation.com or scan QR code.

Instructor: Mike Argall,
National Traffic Safety
Institute



FREE

ROAD
SAFETY

ND Workforce Safety Insurance (WSI) is an event sponsor.



April Newsletter



FCC Happenings

We're here at **NO COST** for kids ages 10 & up Mondays through Fridays 3:15-5:30 & early-out days from 1:15-5:30! We have pool, ping pong, & air hockey, a room full of board games, seasonal ice skating, sledding, snow-shoeing. Due to the Easter break, we will be closed Apr. 15th-17th.

This month we'll also be doing a spring coloring contest for ages 1-15! The winners will be announced on Thurs. Apr. 28th!

Every PLC's early-out days we host a Movie Day where we show a feature film, give free popcorn, treats, & do drawings for door prizes! This month the featured film is "A Bug's Life". There are also concessions & plenty of seating for everyone to hang out! If they want to eat here, combo meals start at only \$3.50 & are no more than \$5.00! They include a main dish, (hot dog, corn dog, hot pocket, Italian dunker, etc.) 2 sides, (chips, string cheese, fruit cup, etc.) & a drink (soda, water)! We also have other concessions available ala carte. Check out our

facebook page at:
[facebook.com/breckenridgefcc](https://www.facebook.com/breckenridgefcc) for updates!

Early Out Movie Day

Movie: "A Bug's Life"

Admission: **FREE**

We'll have door prizes, treats, & popcorn!
Pizza is \$2.75/slice or \$6.00 for 2 slices and a soda or water.

Date: Thursday, Apr. 14th

Time: 1:15-5:30

Pool Tournament Fridays

April Dates: 1st, 8th, 22nd, & 29th

Time: 3:15-5:30pm

Special Senior Pool League & Youth Pool
Tournament:

Friday, April 8th, 3:15-5:30pm

For youth ages 10 & Up

Winner gets a **FREE** combo plate

Game Table Challenge Tuesdays

April Dates: 5th, 12th, 19th, & 26th

Time: 3:15-5:30pm

For youth ages 10 & Up

Winners get a baked treat & participants get a small treat for playing!

Family Community/Teen Center

for full details and to never miss an issue visit:

<https://www.breckenridgemn.net/family-community-center>



Breckenridge Family
Community/Teen
Center Presents:
Our Early Out
Productions



MOVIE ★ DAY ★

FEATURING:

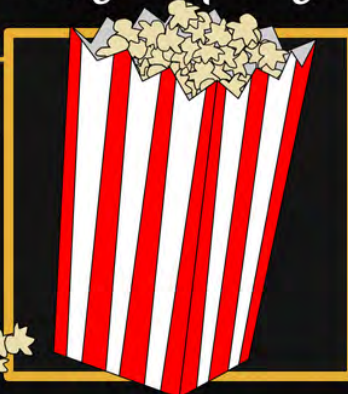
"A Bug's Life"

Thursday, April 14th
1:30-5:30 pm



Join us for door prizes, goody bags, pizza, and popcorn!

For \$6 you get 2
slices of pizza & a
soda or water
FREE POPCORN!



Movie Starts by
2:15
Pizza is ordered at
2:30 & delivered by
3:30



We're on our way!

Great Plains Food Bank

Wednesday, April 20th

Wahpeton: 3:45-5:00 PM

NDSCS Blikre Activities Center lot S9 / 902 14th
Ave N.

For more information or to volunteer please contact:
Zoe Absey, program coordinator
zabsey@greatplainsfoodbank.org | 701.361.1004
For SNAP assistance call: 855-405-0000
www.greatplainsfoodbank.org

USDA is an equal opportunity provider, employer and lender.

3rd
Annual!!

WAHP/BRECK DANCE TEAM

EGG YOUR YARD!

Our dancers are back and ready to hide more eggs! Place your order and dancers will deliver/hide candy filled eggs in your yard between 5am and 8am Easter morning!

You can also pick another delivery time!

Orders can be placed through the following link or directly through a dancer.

Orders due by April 12th!

25 eggs = \$20

50 eggs = \$40

100 eggs = \$75

*The Red Door Art Gallery
is pleased to welcome*

**Winding River Mosaic
- Sheri Kruger - Kukowski**



Sheri's art will be on
display

March 29 -

May 21

Reception

April 21, 5-7 pm



418 Dakota Avenue, Wahpeton, ND

<http://www.reddoorgallerywahpeton.com/>

LARS & HEN "HELGA"

MOSAIC

*The Red Door Art Gallery
is pleased to present our
Garden Art Exhibit*



SUNFLOWER PATCH IN THE
EVENING - KATIE DETWILER

Artist submissions
will be on display

March 29 -

May 21

Reception

April 21, 5-7 pm



418 Dakota Avenue, Wahpeton, ND

<http://www.reddoorgallerywahpeton.com/>

Three Rivers Crisis Center

BAKED POTATO BAR

Free-will donation fundraiser benefitting Three Rivers Crisis Center



TOPPINGS

TACO MEAT	BROCCOLI
SEASONED CHICKEN	SOUR CREAM
CHILI	CAJUN RANCH
NACHO CHEESE	SALSA
SHREDDED CHEESE	BUTTER

**DINE-IN OR
CARRY OUT!**

INCLUDES BEVERAGE AND DESSERT

WHERE

Hughes Shelter

85 R J Hughes Dr
Wahpeton, ND

DATE

Thursday, April 21st, 2022

TIME

11am - 1:30pm

THREE RIVERS



Three River Crisis Center
Wahpeton, ND 58075
701-642-2115



COMMUNITY BLOOD SCREENINGS

APRIL 18-22, 2022

6:00 A.M.-9:30 A.M. MONDAY-FRIDAY

WAHPETON COMMUNITY CENTER, 304 5TH STREET SOUTH - USE EAST 4TH STREET DOOR



PAY \$50, SAVE HUNDREDS

YOUR TIME & HEALTH ARE WORTH IT

FASTING IS NOT REQUIRED

CALL FOR YOUR APPOINTMENT TODAY!

218-643-0123

INCLUDES: Kidney function, Liver function, Cholesterol,
Blood counts & Thyroid Stimulating Hormone (TSH) tests

A COMMUNITY SERVICE SPONSORED BY

*ESSENTIA CLINIC *SANFORD CLINIC *CHI SAINT FRANCIS
*THE ROTARY CLUB OF WAHPETON-BRECKENRIDGE



**Healing Arts
Chiropractic
709 Dakota
Ave Suite B**

**April 23, 2022
10-11am
Come learn
and win
Prizes!**

**Being
Well is
Easy:
Stress**



Join Us Saturday, April 30th for:

CRAWL FOR



- 1. THE DRIFTWOOD**
- 2. CITY BREW HALL**
- 3. FIREHOUSE PUB**
- 4. BOILER ROOM**
- 5. SPORTSMAN'S**
- 6. THE WILKIN**
- 7. CASEY'S**
- 8. GRUMPY'S**

**Sign up sheets will be available
at all of the Bars hosting the
Crawl, Breck Drug...OR join the
Crawl for a Cure Facebook page**

**SIGN UP BY:
APRIL 1ST**

SHIRT SIZES:

UNISEX SMALL - 5XL

A CURE

Kicking Cancer's Butt One Bar At A Time

Festivities will begin at 2:00pm \$20 Gets you A Tee Shirt or Wristband AND

All Participants wearing a Crawl shirt or a wrist band will receive specials at each Bar.

FOR MORE INFORMATION: <https://www.facebook.com/events/458789358143739>

2022 Breckenridge **SPRING** City Wide **RUMMAGE SALE**



Friday, **May 20th** from 8 am - 6 pm
Saturday, **May 21st** from 8 am– 3 pm
Rain or Shine!

A decorative border featuring various golf-related items like golf clubs, golf balls, and a golf bag, set against a green background with blue water hazards.

9th Annual
Scramblin' For A Cure
18 Hole Scramble/4-Person Team
Thursday, July 7, 2022
11:30 Registration— 1:00 Shotgun

Sponsored by My Sister's Keeper
Proceeds to Richland/Wilkin Relay for Life

The logo for Relay for Life, featuring a stylized figure running and the text "RELAY FOR LIFE".



3rd Annual Wahpeton Dollars for Scholars.

9 Hole Scramble / 4 Person Team Golf Tournament
Thursday, May 26th, 2022

BE A HOLE SPONSOR FOR \$100

CHECK IN
12:00

LIMITED TO 18 TEAMS

Contests / Raffles
Awards / Prizes
Mulligans for purchase

Player Information

*Player # 1 _____
Member ___ Non-Member ___
Phone # _____
Email _____

Player # 2 _____
Member ___ Non-Member ___
Phone # _____
Email _____

Player # 3 _____
Member ___ Non-Member ___
Phone # _____
Email _____

Player # 4 _____
Member ___ Non-Member ___
Phone # _____
Email _____

*Contact person/team captain

SHOTGUN START
1:00

Player Fees:
\$25 per member
\$40 per non-member
includes green fees, no meal

Call ahead
to reserve golf cart!
not included in Player Fee



**Please mail entry
w/ Player Fees to:**

**Bois De Sioux
Golf Course**
1305 RJ Huges Dr
Wahpeton, ND 58075
701-642-3673

Wahpeton Dollars for Scholars
% Darci Theede
717 2nd Ave N
Wahpeton, ND 58075
701-672-6503
dtheede@hell.bank

Register by May 15th!!!

Proceeds will go to the Larry Gast Memorial Scholarship Fund

5K

FUN RUN / WALK

Proceeds benefiting Breckenridge Community Center

9th ANNUAL • 2022

WHEN:

WEDNESDAY, May 4th, 2022

Cost: \$25

Includes t-shirt

*\$35 after April 14 t-shirt
not guaranteed*

CHECK IN: 5:00-6:00 PM

****You must pre-register by April 14th by 3 pm @ OSPTI
or by calling (218) 641-7725 in order to guarantee an event t-shirt!**

RACE TIME: START LINE

6:00 PM

OSPTI

***No bikes or rollerblades please.**

OSPTI

ORTHOPEDIC & SPORTS
PHYSICAL THERAPY INC.

COLOR - A - THON

Wednesday, May 11th, 2022

Register Now Online @ <http://shop.schoolathon.org/194932>

ALL proceeds benefit the Breckenridge Education Foundation

schoolathon.org

\$30/person

Includes a shirt & color pack

Registration: 5:00 – 5:45 pm

Race Instructions: 5:45 pm

Event Starts: 6:00 pm

Breckenridge Elementary School

810 Beede Ave Breckenridge

***Registration will take place on the south side
of the building***

**FUN FOR THE
WHOLE FAMILY**

**A FREE WILL PICNIC
DINNER WILL BE SERVED
FOLLOWING THE RACE!**

RELAY FOR LIFE

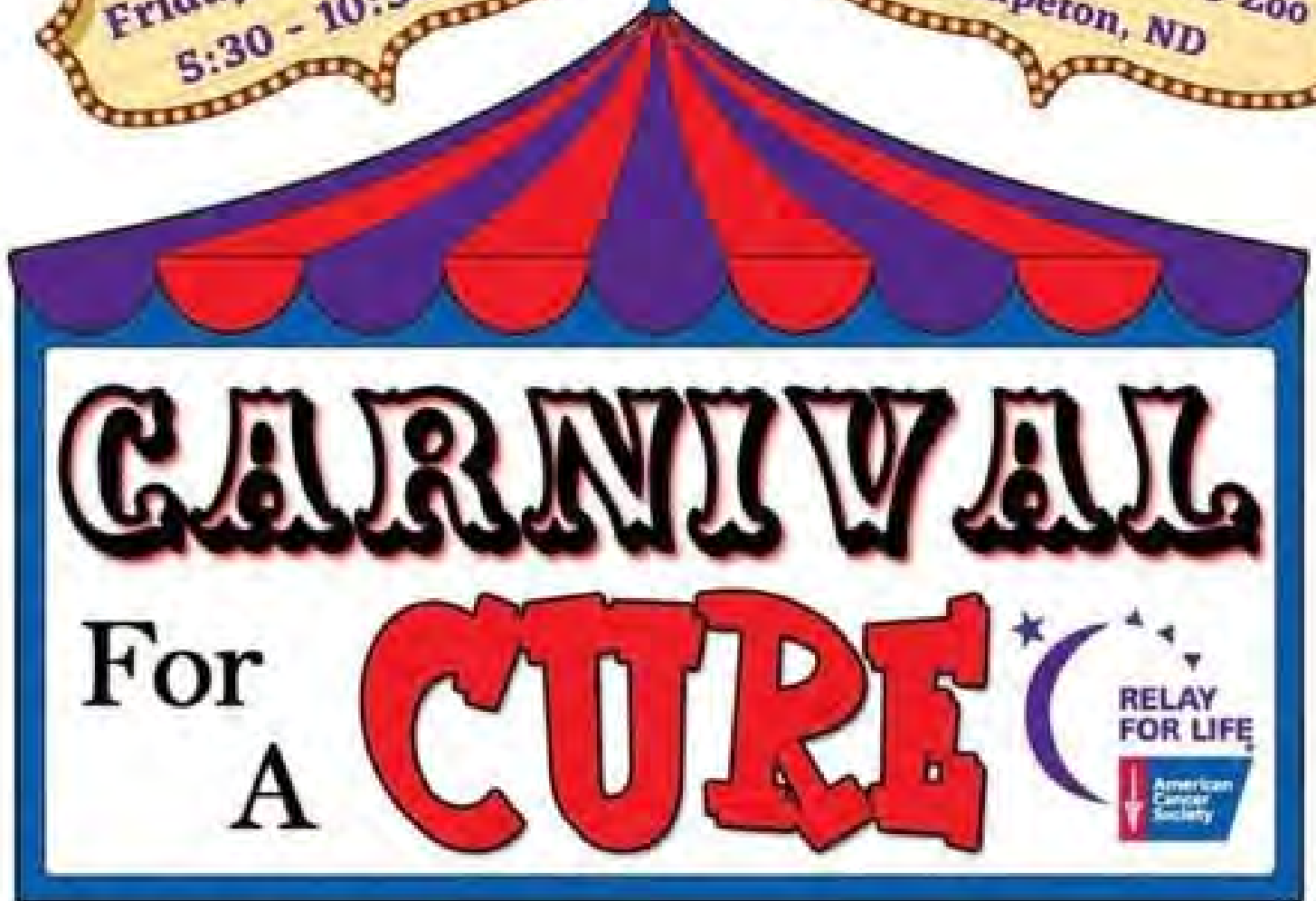
of Richland and Wilkin Counties



Friday, June 3, 2022
5:30 - 10:30 PM



Chahinkapa Park & Zoo
Wahpeton, ND



Start or Join a Team

Register online at www.relayforlife.org/richlandwilkinnd

Contact Carol Poppel at 701-403-9232 or poppelcarol@gmail.com for more information.

Donations



May be made online or dropped off at the First Community Credit Union, 1601 Wheatland Road, Wahpeton, ND.

Survivors, caregivers, and the entire community are welcome!



Are you or someone you know in need of
Home Repair Assistance?

Group Workcamp 2022

June 19th - June 25th

Lakes & Prairies Community Action Partnership (CAPLP) is teaming up with Group Workcamps to help improve homes within 30 miles of Moorhead, Minnesota June 19-25, 2022. We are reaching out to older adults, persons with disabilities, single parents, and income eligible residents. We are excited to transform homes and create better living conditions for the families we serve! Hundreds of youth from across America will come together for five days to repair and transform homes while strengthening and transforming their own faith.

Each home site will consist of 4-5 senior high youth and at least one adult leader. Site writers will visit your home prior to the Group Workcamp and help with identifying repairs and materials needed for your specific project. **Eligible households must be within 30 miles driving distance of Moorhead, MN (Homes must be located in MN)**. Eligible repairs are “basic” home repair and are listed with this application.

Both labor and materials will be free to qualifying households. Work will be done by youth volunteers. Households receiving assistance must agree to provide water, electricity for tools, a restroom for the volunteers as well as providing an adult in the home the week of the repairs.

You will be contacted in Spring 2022 about the status of your application. At no time, can we guarantee that work will be completed on your home. Please complete the following questions and return your application to the following address:

Please fill out the application and mail to the address below or return via fax or e-mail.

CAPLP - Lakes & Prairies Community Action Partnership
891 Belsly Boulevard
Moorhead, MN 56560
Fax: (844) 215-7287
Email: robinc@caplp.org

Questions regarding the 2022 Group Workcamp?
Call Robin at CAPLP (218) 512-1558

2022 CAPLP - Lakes & Prairies Community Action Partnership Group Workcamp Application

Name _____ Phone number _____

Address, City, Zip _____

Date of Birth _____

Please answer the following questions:

How many people currently live in your household? _____

Names and birth dates for everyone in your household:

Number that are 60+ years of age: _____

Are you a single parent? Yes or No

How many in your household are US military veterans? _____

Does anyone in your home have a disability? Yes or No

Annual household adjusted gross income \$ _____

Driving distance from Moorhead, MN: _____ miles. (MN RESIDENTS ONLY)

Please "X" the type of work you would like to have completed on your home: Exterior painting:

Interior painting:

Number of rooms: _____ Number of stories: _____ Trim work? Yes or No.

"X" a description for the exterior of the whole house: light scraping extensive scraping

Minor repairs (handrail, porch/steps, skirting repair)

Weather stripping around windows/doors

New wheelchair ramp construction

Caulking around windows/doors

New stoop and step construction

New mobile home skirting

New steps only

Minor fascia/soffit repair or painting

Are any of these repairs needed to address safety/health issues? Yes No

Which items? _____

Is there anything else you would like to tell us about your home? _____

Please sign below to complete your application.

All the information I have provided is true and accurate to the best of my knowledge.

Signature: _____ Date: _____

Please complete the above application and return your application to:

CAPLP, 891 Belsly Boulevard, Moorhead, MN 56560
or via fax or email: Fax- 218-643-5310 | robinc@caplp.org

Questions regarding the 2022 Group Workcamp?

Call Robin at CAPLP (218) 512-1558

PROMETHEUS M.C.

JUNE 24TH-26TH

ZOO

2022

RUN

RALLY DAYS

The 37th Annual Fundraiser
for the Chahinkapa Zoo

Friday - Map Run and ride in
Bike/Car Show with Cornhole
Tournament/Games

9am Saturday breakfast at the
Chahinkapa Zoo. Kickstands up
@ Noon! Street Dance/Silent Auction

Camping available @ Wells Memorial Park.
Contact Rhino for more info. (701) 541-3001
or follow us on Facebook @prometheusmc1985

or visit www.zoorun.com

ZOO RALLY DAYS 2022

Saturday

6/25

Prometheus MV

Wahpeton, ND

37TH ANNUAL

ZOO RUN

"free will" breakfast (8-11)

@ the Chahinkapa Zoo

ride registration (9-11:30)

KSU from the Zoo @ NOON

140 mile ride includss hog roast

Street dance opens @ 7

50/50 & silent auction

\$20/bike

THE
CULTURE
FOOD TRUCK

contact Rhino for
camping

reservations and info

701 541-3001

Welles Park camping
Friday-Sunday

\$20/camper

\$10/tent

shuttle rides
available



Street Dance

\$5 (under 12 free)

proceeds go to Chahinkapa Zoo



HEADWATERS DAY

September 10, 2022
Breckenridge, MN

We are looking for groups, businesses, organizations or anyone interested in helping plan this year's Headwaters Day, a Breckenridge Community Event. Some ideas include . . .

Antique Car Show

Cornhole, Basketball, Pickleball, Disc Golf Tournament

Talent/Fashion/Dance Show or Demonstration

5k Run/Walk

Musical Entertainment

Vendor or Informational Booth

Food Vendor/Truck

Games and Face Painting

Scavenger Hunt

If you are interested in holding an event, volunteering or being a Committee Member please contact one of the below before June 1st, 2022.

Lisa at Wahpeton Breckenridge Area Chamber of Commerce
(701)642-8744 or lisa@wbchamber.net